



Working

**WOMEN'S REPRESENTATION AND LEGISLATIVE COMMITTEE
APPOINTMENTS: THE CASE OF THE ARGENTINE PROVINCES**

TIFFANY BARNES

397

**March
2014**

paper



KELLOGG INSTITUTE FOR INTERNATIONAL STUDIES

The Kellogg Institute for International Studies
University of Notre Dame
130 Hesburgh Center for International Studies
Notre Dame, IN 46556-5677
Phone: 574/631-6580
Web: kellogg.nd.edu

The Kellogg Institute for International Studies at the University of Notre Dame has built an international reputation by bringing the best of interdisciplinary scholarly inquiry to bear on democratization, human development, and other research themes relevant to contemporary societies around the world. Together, more than 100 faculty and visiting fellows as well as both graduate and undergraduate students make up the Kellogg community of scholars. Founded in 1982, the Institute promotes research, provides students with exceptional educational opportunities, and builds linkages across campus and around the world.

The Kellogg Working Paper Series:

- Shares work-in-progress in a timely way before final publication in scholarly books and journals
- Includes peer-reviewed papers by visiting and faculty fellows of the Institute
- Includes a Web database of texts and abstracts in English and Spanish or Portuguese
- Is indexed chronologically, by region and by research theme, and by author
- Most full manuscripts downloadable from kellogg.nd.edu

Contacts: Elizabeth Rankin, Editorial Manager
erankin3@nd.edu

**WOMEN'S REPRESENTATION AND LEGISLATIVE COMMITTEE
APPOINTMENTS: THE CASE OF THE ARGENTINE PROVINCES**

Tiffany D. Barnes

Working Paper #397 – March 2014

Tiffany D. Barnes is an assistant professor of political science at the University of Kentucky. Her research is in the field of comparative politics with a focus on Latin American politics, political institutions, and women and politics. In the fall of 2013 she was a visiting research fellow at the Kellogg Institute. Her current book project develops theoretical expectations about when and why female legislators collaborate to pursue common legislative interests. She tests these expectations using original data from twenty-three provincial legislative chambers in Argentina over an eighteen-year period of time. Her empirical analysis is based on data she collected during extensive fieldwork in Argentina. Over a course of eighteen months, she visited twenty-seven different provincial legislatures (in nineteen provinces) where she conducted archival research and elite interviews. Her research appears in *Comparative Political Studies*, *Gender & Politics*, and *Conflict Management and Peace Science*.

ABSTRACT

Over the last two decades a large number of countries worldwide have adopted a gender quota to increase women's political representation in the legislature. While quotas are designed to achieve equality in legislative power and decision-making, it is unclear if electing more women to legislative office is sufficient to accomplish institutional incorporation. Once women are elected to office, are they being incorporated into the legislative body and gaining their own political power, or are they being marginalized? Using an original data set that tracks committee appointments in the twenty-two Argentine legislative chambers over an eighteen-year period, I evaluate the extent to which women have access to powerful committee appointments—beyond traditional women's domains committees—and how women's access to committee appointments changes over time. I hypothesize that while women may initially be sidelined, as they gain more experience in the legislature they may overcome institutional barriers and develop institutional knowledge that will better equip them to work within the system to gain access to valuable committee appointments.

RESUMEN

Durante las dos últimas décadas un gran número de países de todo el mundo adoptaron cuotas de género para aumentar la representación política de las mujeres en las legislaturas. Si bien las cuotas han sido diseñadas para alcanzar igualdad en el poder legislativo y en la toma de decisiones, no está claro si la elección de más mujeres para cargos legislativos es suficiente para completar la incorporación institucional. Una vez que las mujeres son electas, ¿se las incorpora al cuerpo legislativo y ganan su propio poder político o se las margina? Usando una base de datos original que registra los nombramientos en comisiones en 22 cámaras legislativas en Argentina durante 18 años, evalué en qué medida las mujeres tienen acceso a posiciones de poder en las comisiones—más allá de las comisiones de temas tradicionalmente considerados de mujeres— y cómo cambia a lo largo del tiempo el acceso de las mujeres a los nombramientos dentro de las comisiones. Mi hipótesis es que aunque inicialmente las mujeres pueden ser marginadas, a medida que ganan más experiencia en la legislatura pueden superar las barreras institucionales y desarrollar conocimiento institucional que las prepara mejor para trabajar dentro del sistema de modo de tener acceso a nombramientos valiosos en las comisiones.

In the past three decades, governments around the world have taken measures to increase women's numeric representation¹ in legislative bodies. Of particular interest, over a hundred countries worldwide have adopted some form of gender quota to increase women's access to legislative influence. Quotas are designed to achieve equality in legislative power and decision-making, yet it is unclear if electing more women to legislative office is sufficient to accomplish institutional incorporation. In particular, extant research indicates that women are not attaining influential political appointments such as powerful committee posts at the same rate as their male counterparts (Heath, Schwindt-Bayer, and Taylor-Robinson 2005; Schwindt-Bayer 2010). Once women are elected to office, are they being incorporated into the legislative power structure and achieving influence, or are they being marginalized?

I argue that, as newcomers, women entering into male-dominated legislative arenas may face structural barriers that limit their access to valuable resources, such as powerful committee appointments, within the legislatures. But as women gain more experience in the legislatures, they may overcome these barriers and develop institutional knowledge that will better equip them to work within the system to gain access to these resources. Thus, I hypothesize that increases in numeric representation may initially result in a marginalization of female legislators, but over time women's access to powerful appointments will increase. To evaluate this hypothesis I examine women's appointments to prestigious committee appointments in twenty-two subnational Argentine legislative chambers over an eighteen-year period.

In doing so, my research makes three contributions to the literature on women's legislative appointments. First, it moves beyond previous research that considers women's access to legislative appointments and how they change, based on the composition of the legislature, to develop theoretical expectations for how women's access to valuable legislative appointments change over time, as numeric representation becomes more institutionalized in the legislature. Second, I test my hypotheses using an original subnational data set that allows me to examine legislative committee appointments over a large number of chambers and a long duration of time. Finally, I provide strong empirical support for my theoretical expectations, which have important implications for understanding how women's access to legislative committee appointments changes as women learn to navigate the legislative arena.

¹ Hereinafter referred to as numeric representation.

WOMEN AND LEGISLATIVE COMMITTEE APPOINTMENTS

Over the last few decades, women have gained access to legislatures across the globe in record proportions (IPU 2012). Still, the question remains: once women are in office, are they fully incorporated into the decision-making process, or are they excluded from important positions of power? Some research addressing this question finds evidence that women are less likely than men to receive powerful committee appointments, but other studies find evidence to suggest that women are not disadvantaged in their committee appointments.

Research that finds evidence of gender differences in committee assignments often shows that women are less likely to receive to powerful committee posts (“powerful committees” vary depending on the context but often include economy, finance, foreign affairs, or agriculture) and more likely to receive appointments to “social issue” committees or committees with stereotypically feminine issue domains (e.g., culture, education, health care, human rights, and family and youth) (Heath, Schwindt-Bayer, and Taylor-Robinson 2005; Kerevel and Atkeson 2013; Schwindt-Bayer 2010; Thomas 1994; Towns 2003). These results lead some scholars to conclude that women are being marginalized in the legislatures and do not have the same opportunities as men to sit on powerful committees (Heath, Schwindt-Bayer, and Taylor-Robinson 2005). Nonetheless, studies that look at legislators’ preferences in congruence with their committee appointments find that differences in committee assignments often reflect women’s preferences or a combination of preferences and discrimination. For example, studies from the United States Congress and Danish local councils find that gender differences in committee assignments are consistent with legislators’ preferences and are unlikely to be a product of discrimination (Bækgaard and Kjaer 2012; Thomas 1994). In the case of Latin America, Schwindt-Bayer (2010) determines that women’s overrepresentation on social issue committees is consistent with legislators’ preferences, yet women’s underrepresentation on powerful committees and more stereotypically masculine domain areas is not consistent with legislators’ preferences and thus can be attributed to discrimination.

Still, gender differences in committee assignments are not universal. Research from Great Britain, Mexico, Scotland, Sweden, and Wales does not find systematic gender differences in committee assignments (Brown et al. 2002; Kerevel and Atkeson 2013; O’Brien 2012). For example, in the case of select committees in the British House of Commons, O’Brien (2012)

finds that women and men have the same likelihood of obtaining select committee appointments.² Moreover, she demonstrates that women may actually be *advantaged* in intraparty elections for select committee chair appointments. Similarly in the Mexican Chamber of Deputies, Kerevel and Atkeson (2013) show that women are less likely to be appointed to economic committees but are not less likely to be appointed to other powerful committees or to hold committee chair positions.

Extant research has made significant contributions to our understanding of women's ability to gain access to powerful committee appointments. Several questions remain unexplored, however. In particular, few studies make cross-chamber comparisons, comparisons over a significant duration of time, or direct comparisons from before and after the adoption of gender quotas.³ These limitations make it difficult to understand how factors such as the adoption of quotas or changes in numeric representation influence women's appointments and how this changes over time. I have designed my research to directly address the influence of these three factors.

GENDER QUOTAS, NUMERIC REPRESENTATION, AND ACCESS TO POWERFUL APPOINTMENTS

A large body of research demonstrates that the implementation of quotas is a fast-track method for increasing numeric representation (Jones 2009; Schwindt-Bayer 2009; Thames and Williams 2013). Despite providing women access to the legislative arena, the adoption of gender quotas (Schwindt-Bayer 2010) and increases in numeric representation (Heath, Schwindt-Bayer, and Taylor-Robinson 2005) have often resulted in the marginalization of women within the legislative chamber. Indeed, research has articulated a number of reasons why the adoption of gender quotas and sharp increases in numeric representation may result in limited access to valuable legislative appointments among female legislators. Nonetheless, there is also reason to believe that women's access to powerful appointments in the legislature may improve overtime (Beckwith 2007; Grey 2006). Drawing on previous research and interviews with female legislators from the Argentine provinces, I first articulate why women may have less influence in the legislature when they are newcomers. Then, I develop an explanation for why women's

² Select committees are special oversight committees in the UK Parliament (see O'Brien 2012).

³ But see Heath, Schwindt-Bayer, and Taylor-Robinson (2005), Schwindt-Bayer (2010), and Kerevel and Atkeson (2013) for examples of studies that compare appointments from before and after quota adoption.

access to powerful positions may increase over time, as numeric representation becomes institutionalized in the legislative chamber.

Women as Newcomers: Limited Access to Powerful Appointments

For multiple reasons, the implementation of gender quotas combined with sizable increases in numeric representation could result in marginalization of female representatives or backlash from male legislators, both of which may ultimately limit women's influence and access to powerful appointments in office (Franceschet and Piscopo 2008, Schwindt-Bayer 2010). One reason for this concern is that quotas reserve positions for women on the electoral ballot or in the legislative chamber, and as a result male legislators (the traditionally dominant group) may feel threatened by the newcomers, fearing that female legislators will demand and occupy scarce resources. This point is illustrated by a female deputy's observation that men occupy the majority of powerful positions in the Salta Chamber of Deputies. She notes that among men "there may be a fear that they will lose their positions, because for women to gain these positions, men have to lose them."⁴ Male legislators may therefore respond by bypassing women for powerful political appointments in an effort to preserve power for themselves (Bauer and Britton 2006; Beckwith 2007; Zetterberg 2008). Schwindt-Bayer (2010) finds some support for this phenomenon. In the case of the Argentine National Congress, for example, she finds that women's access to powerful committee appointments declined after the adoption of gender quotas.⁵

In addition to backlash from male legislators, women may face other structural barriers that initially limit their access to valuable political appointments. A second reason women may not receive appointments to powerful committees is that, as newcomers, female legislators may have less experience in these policy or "thematic" areas and therefore may not be chosen for and/or may not choose to pursue appointments on these committees. For example, when describing the first legislative session after the implementation of gender quotas in Entre Ríos, a female deputy observes that female legislators from Entre Ríos are practically absent from the

⁴ Interview with Front for Victory (Frente para la Victoria, FpV) legislator, Salta, July 10, 2013.

⁵ These same findings do not hold in the case of Costa Rica (Schwindt-Bayer 2010). If quotas do not result in a sizable increase in women's representation, it is unlikely that they will result in significant backlash. For example, in the case of Mexico, quota adoption only resulted in a 7 percent increase in numeric representation, and Kerevel and Atkeson (2013) find little evidence of marginalization.

budget committee. From her point of view, however, this is not because men are excluding them from positions of power; rather, she suggests that women do not pursue these positions. She explains, “in general, we women in the chamber are not involved in issue areas dealing with numbers. We do not approach them, and men do. Maybe it is also because this is the first time we were ever elected. This is the first time we have studied the provincial budget. It is probably one of the toughest themes to study. That is why women are not associated with the numeric themes.”⁶ If her reasoning is correct, when women are new to the legislative system they may be underrepresented in powerful committees such as the budget committee, but as they develop policy expertise in these thematic areas they may feel more confident about pursuing appointments and serving on powerful committees that require more technical knowledge.

A third, related reason why women may not initially receive valuable appointments is that when gender quotas are first adopted, women, like any group of newcomers (see, for example, Fenno 1997) may lack the practical and political skills (such as familiarity with formal legislative rules and more subtle norms) necessary to successfully navigate the legislative arena, which is essential for obtaining valuable committee appointments (Franceschet and Krook 2008). Gender quotas typically lead to a sudden increase in the number of women in office. It is likely that the majority of these women do not initially have the legislative experience required to accomplish their goals and maneuver within the legislative arena. As a result, they may not be assigned to powerful committee appointments and instead may be relegated to committees focused on traditional women’s issues or social issues. In the first session after the adoption of gender quotas in Entre Ríos, a female deputy provided the following account: “There are women who are legislators for the first time. Meanwhile, there are men who have been deputies or senators before. They have been trained. They know what they have to do to achieve their goals... We [women] are still learning, we do not know yet, it is all a practice.”⁷ To achieve goals such as obtaining powerful committee appointments, women must first learn how to operate within the rules and norms of legislature.

Fourth, women who do want to serve on more powerful and/or stereotypically masculine committees may be less inclined than men to ask for the committee appointments they want. Females are typically socialized from a young age to be communal, nurturing, and “other-

⁶ Interview with FpV deputy, Entre Ríos, July 16, 2013. Translation here and throughout the paper is the author’s.

⁷ Interview with FpV deputy, Entre Ríos, July 16, 2013.

oriented,” focusing not on their own needs but on the needs of others (Eagly 1995, 1987). Males, by contrast, are taught to be assertive, dominant, decisive, ambitious, and “self-oriented” (Eagly 1987; Heilman 1995). While men are taught to negotiate, women are taught “nice girls don’t ask” (Babcock and Laschever 2007, 68). Business and academia are rich with anecdotes of women avoiding negotiation and not asking for what they want (e.g., Babcock and Laschever 2007); and there is no doubt that gender roles also influence women’s ability to obtain desirable positions in the legislature. In the Federal District, a female deputy describes an environment in which men are more willing to speak up and demand the committee appointments they desire and women are more timid and hesitant to make demands.⁸ If women are not speaking up and asking for the appointments they want or think they deserve, it is easy for the dominant group to hoard valuable committee appointments while shunting women onto social issues committees.

Taken together, this discussion illustrates a number of reasons why women, as newcomers, may not receive valuable appointments within the legislature. This is important because it suggests that women do not have the same opportunities as men to influence policy decisions that are made in powerful committees. But, as I discuss in the following section, over time female legislators may learn to navigate the legislative process and overcome some structural barriers, thus facilitating access to more powerful appointments.

Increased Access to Powerful Appointments

The adoption of gender quotas and steep increases in numeric representation may trigger the initial marginalization of women in the legislature; nevertheless, there is reason to believe this may change over time (Beckwith 2007; Grey 2006). As numeric representation becomes entrenched in the legislature and women establish their position in the chamber, they may make lasting gains for a number of reasons.

First, by increasing women’s presence in the legislature, over time gender quotas may cause perceptions and stereotypes about women’s role in politics to change. Formal rules, such as gender quotas, are not sufficient to change attitudes towards female politicians, but as Kittilson (2005, 643–44) explains, “formal rules and informal cultural norms mutually reinforce each other. In this way, gender quota policies can act as mechanisms for bringing women

⁸ Interview with Federal District deputy from a small third party, July 16, 2013.

immediate gains in parliamentary seats, and can also reshape attitudes, values, and ideas towards women's roles in politics." When people see women in politics, their ideas about women's role in society may begin to change, and they may view women as more capable political leaders. As such, even where the adoption of gender quotas results in immediate male backlash, over time it may result in changes in attitudes towards women's representation. When reflecting on how the chamber has changed since the adoption of gender quotas in Mendoza, a female deputy explains, "Little by little, we have been winning [men's respect].... There are very small and subtle changes.... Women have also noticed it in the kind of work they do. Now, they combine gender work with the other more technical profile, such as social, financial, cultural, or legal."⁹ Her comments illustrate that as people's attitudes towards women's role in politics change, women have more opportunities to legislate over a broader number of themes. While increasing numeric representation is not sufficient to change everyone's attitude, increases in numeric representation combined with other changes, some of which I discuss below, may result in more political power among female legislators.

Second, as women gain more experience in the legislature, they will overcome institutional barriers and develop technical and institutional knowledge that will better equip them to work within the legislature to accomplish their goals. Advances in women's ability to navigate the legislature should not be limited to women with legislative experience. Rather, senior female legislators are likely to mentor newcomers and teach them how work within the system to accomplish their goals. Indeed, extant research on female leadership indicates that women are more likely than men to mentor and support junior colleagues (Eagly, Johannesen-Schmidt, and van Engen 2003). For example, a female senator from Mendoza explains, "I believe that you need to understand the dynamics and get to know the practical rules of a place. When I started, it was the other women who taught me and guided me.... I had been a deputy, and not a senator. It is a different dynamic, even though I know the rules, it has a different rhythm, a different way of interacting with the opposition."¹⁰ Guidance from her female colleagues was important for teaching her the rules of the game, which allowed her to work within the system to accomplish her goals. As numeric representation becomes institutionalized via gender quotas and significant proportions of women serve in the legislature for multiple

⁹ Interview with Radical Civic Union (Unión Cívica Radical, UCR) deputy, Mendoza, June 26, 2013.

¹⁰ Interview with UCR senator, Mendoza, June 27, 2013.

sessions, women will be better equipped to transfer institutional knowledge from one cohort of female legislators to the next.

Third, as numeric representation becomes institutionalized, women may begin to feel more confident about negotiating for and pursuing the legislative appointments that they want. Women in numerous interviews attest that being a numeric minority makes it more difficult to speak up and ask for what that want, but having other female colleagues can provide encouragement and confidence to overcome these barriers. A Mendoza deputy summarizes it nicely: “I think that the quota law has permitted women to participate more, to get more support, and to look at the one next to you who feels insecure and make them feel encouraged. We don’t feel alone.”¹¹

As a result of these factors, though women may initially be sidelined, as they gain more experience in the legislature they may overcome institutional barriers and develop institutional knowledge that will better equip them to work within the system to gain access to desirable committee appointments. In other words, although gender quotas accompanied by a sharp increase in numeric representation may initially increase the marginalization of women, with time they will empower women. While it is beyond the scope of this paper to distinguish among the different factors that influence women’s committee appointments, all of the factors discussed above suggest that we should observe the same relationship between the duration of time since gender quota adoption and women’s committee appointments. Accordingly, I test the following two hypotheses.

Marginalization Hypothesis: Conditional on women being newcomers to the legislative chamber, as the percentage of women in the legislative chamber increases, women will be more likely to be appointed to women- and family-oriented issues committees and social issues committees and less likely to be appointed to power and/or economic and trade committees.

Political Empowerment Hypothesis: Conditional on women holding a significant proportion of seats in the legislature, as the duration of time increases since the adoption of gender quotas, women will be less likely to be appointed to women- and family-oriented issues committees and social issues committees and more likely to be appointed to power and/or economic and trade committees.

¹¹ Interview with UCR deputy, Mendoza, June 26, 2013.

THE ARGENTINE CASE

Gender quotas are still a relatively new political institution, so there are limited opportunities to examine a large number of legislatures over a significant duration to assess if and how women's experience in the legislature changes over time after the initial adoption of quotas. To address this challenge, I turn to the Argentina provinces where gender quotas have been in place since the 1990s (Barnes 2013). During this period, all but a few legislative chambers in Argentina adopted a quota. (Table 1 lists the legislative chambers and years included in my analysis.) For most chambers, observations range from 1992, the year before gender quota adoption began to diffuse across the Argentine provinces, to 2009. The long temporal domain (up to eighteen years) allows me to examine how time since quota adoption influences women's appointments to legislative committees across a large number of chambers.

In my sample, women rarely occupy a notable proportion of legislative seats prior to the adoption of a gender quota. As illustrated in the fifth column of Table 1, prior to quota adoption most of the provinces in Argentina had a very small proportion of women in office (lows range from 0 to 10 percent of total representation). Each chamber that adopted a gender quota, however, saw a significant increase in numeric representation over the period of time under analysis (resulting in close to 40 percent of total representation in some cases).

The Committee System in the Argentine Provinces

In the Argentine provinces, committee appointments are typically distributed to political parties in proportion to their seat share in the legislature. For the chambers in my sample, with the exceptions of Entre Ríos and Salta, this arrangement is explicitly stipulated in the chamber rules.¹² In Entre Ríos and Salta, the language is absent from the official rules, but numerous interviews indicate that the chamber norm is to distribute committee appointments proportionally amongst political parties.

¹² Seats are not distributed proportionally in the Córdoba Unicameral Chamber or former Córdoba Lower House. The chamber rules reserve five seats for the majority party, two for the largest minority, and one for the remaining minority parties.

TABLE 1

SAMPLE SELECTION AND DESCRIPTIVE STATISTICS

District	Years in Sample ¹³	Gender Quotas	Year Adopted	Average % Women in Chamber (Range)	# of Standing Committees	# of Seats in Chamber	Average # of Appointments per Member (Range)
Federal District	2002–2009	30%	1991	37 (35–38)	22	60	3.0 (1–8)
Buenos Aires Senators	1992–2009	30%	1995	20 (7–30)	23	46	4.2 (1–10)
Buenos Aires Deputies	1992–2009	30%	1995	22 (7–32)	36	92	3.0 (1–8)
Chaco	1994–2009	30%	1992	29 (13–38)	15	32	3 (1–6)
Chubut	1994–2009	30%	1994	26 (11–33)	8	27	2.0 (1–4)
Córdoba Senators	1992–2001	30%	1994	5 (0–12)	18	67	2.7 (1–17)
Córdoba Deputies	1992–2001	30%	1994	17 (4–26)	16	66	2.8 (1–9)
Córdoba Unicameral	2002–2009	50%	1994	33 (27–34)	16	60	2.1 (1–5)
Corrientes Senators	1992–2009	30%	1992	20 (0 to 38)	11	13	4.2 (1–9)
Corrientes Deputies	1994–2009	30%	1992	25 (4–38)	13	26	2.1 (1–4)
Entre Ríos Deputies	1998–2009	No ¹⁴	–	11 (4–17)	21	28	4.9 (1–13)
Formosa	1996–2009	30%	1995	28 (10–39)	9	30	3.2 (1–7)
Jujuy	1992–2007	No ¹⁵	–	23 (10–27)	11	48	2.7 (1–6)
Mendoza Senators	1998–2008	30%	1992	18 (13–24)	13	38	2.7 (1–6)
Mendoza Deputies	1992–2009	30%	1992	17 (4–24)	13	50	2.6 (1–6)
Misiones	1994–2009	30%	1993	28 (25–30)	12	40	2.3 (1–4)
Río Negro	1996–2009	50%	1993	27 (22–37)	5	46	1.4 (1–5)
Salta Senators	2000–2009	No	–	11 (9–13)	11	23	2.3 (1–6)
Salta Deputies	2000–2007	30%	1994	18 (10–27)	18	60	3.6 (1–8)
Santa Cruz	1992–2009	30%	1992	18 (10–27)	10	28	2.3 (1–6)
Santa Fe Senators	1992–2009	No	–	4 (0–11)	16	19	4.1 (1–9)
Santa Fe Deputies	2000–2009	30%	1992	30 (28–36)	13	50	2.7 (1–6)
Tucumán	1992–2009	30%	1994	18 (8–27)	22	49	3.0 (1–7)

¹³ The data were collected on a biennial basis.

¹⁴ Entre Ríos adopted a gender quota of 25 percent in 2011.

¹⁵ Jujuy adopted a gender quota of 30 percent in 2010.

At the beginning of the legislative session, each political party holds a meeting in which members from that party decide who will occupy each committee appointment allocated to the party. In the party meeting, each member has the opportunity to state his or her committee preferences, and then members of the party discuss among themselves and decide who will be appointed to each committee. Even though everyone has the opportunity to state his or her preferences, depending on the political party's norms and other circumstances, the final decision may not always be democratic. Numerous interviews with provincial legislators from all of the chambers in my sample indicate that in some cases appointments are decided by an informal vote among party members but in other cases a few influential members of the party or the party boss himself decide them. Regardless of the party norms, typically the final decisions are subject to the approval of the party boss. With only a few, extremely rare, exceptions party bosses are always men. This committee assignment process creates an environment in which the obstacles discussed above are major challenges that women must overcome to receive powerful committee appointments.

COMMITTEE DATA FROM THE ARGENTINE PROVINCES

I analyze the probability that women will be appointed to four different (but not mutually exclusive) categories of legislative committees: Women and Family Committees (WFC), Social Issues Committees (SIC), Economic and Trade Committees (ETC), and Power Committees (PC). PCs are defined as the committees that have the most influence and power in the chamber. Interviews with numerous legislators in each of the chambers in my sample revealed that in the case of the Argentine provinces, PCs are typically the budget committee, the general legislation committee, and the constitutional issues committee. The Appendix provides a detailed coding of each committee category.

The unit of analysis is an individual legislator. Following Heath, Schwindt-Bayer, and Taylor-Robinson (2005), for each category each legislator is coded 1 if s/he sits on a committee that is classified as belonging to a given category and 0 otherwise. All legislators in my sample are permitted to sit on multiple committees in a given legislative session. This coding results in four dichotomous dependent variables.

Independent Variables

I include both male and female legislators in my analysis, which enables me to compare women's probability of appointment to men's. As such, the first variable of interest in my analysis is the sex of the legislator. The variable labeled *Female* is coded 1 for female legislators and 0 for male legislators. The second variable of interest is *Numeric Representation*. I use the proportion of women in the legislature in a given legislative session to evaluate how increases in numeric representation influence the probability that women will receive powerful committee appointments or be sidelined. The third variable of interest, *Quota Years*, measures the number of legislative sessions in which a given chamber has used a gender quota.¹⁶ In my analysis the number of sessions using a gender quota ranges from 0 to 8.¹⁷

According to my hypotheses, each of the aforementioned relationships should be conditional. The *Marginalization Hypothesis* is conditional on women being newcomers to the legislature (i.e., the time since quota implementation). The *Political Empowerment Hypothesis* is conditional on the proportion of women in the legislature. To address the conditional nature of these hypotheses I include a series of interaction terms. First, I interact *Female* with *Numeric Representation* to account for the expectations that numeric representation should influence women's political appointments differently than men's. Second, I interact *Female* with *Quota Years* to account for the expectation that the number of years since women have occupied a sizable proportion of the chamber's seats should influence women's appointments differently than men's. Then, to account for the conditional nature of my hypotheses, I interact *Numeric Representation* with *Quota Years* as well as *Numeric Representation*, *Quota Years*, and *Female*.

In addition to my independent variables of interest, I control for a number of other factors that may influence committee appointments. First, individuals with more legislative experience may be more likely to be appointed to prestigious committees. To account for this effect, I

¹⁶ If a chamber never adopted a gender quota, it is coded 0 for every observation period. The results in the analysis are robust to the exclusion of legislative chambers that did not adopt a gender quota during my period of analysis (i.e., Entre Ríos deputies, Salta senators, and Santa Fe senators).

¹⁷ In cases where my data begin after quota adoption, the number of years since quota adoption is still coded as a count of the number of years since implementation; as a result, the first observation in the data for some chambers may be greater than one. The one exception to this is the Federal District where gender quotas were adopted in 1991 for municipal elections. The Federal district does not have its own gender quota; rather it implements the national gender quota law (Tula 2008). The same quota rule was applied when the Federal District became independent and held the first election as an autonomous district in 1996. While there were other municipal elections prior to this date, this is technically the first election as an autonomous district and is therefore used as the starting date for quota implementation.

control for previous legislative experience; *Previous Term* is coded 1 for representatives who have previously served in the same chamber and 0 otherwise. In my sample 20.9 percent of female legislators and 21.3 percent of male legislators served a previous term. The difference is not statistically significant. Individuals who are appointed to more posts may be more likely to hold prestigious committee appointments. Also, the number of appointments legislators hold will vary within legislative chambers but also across legislative chambers. Table 1 illustrates the variation in the number of appointments per legislator both across chambers and within chambers. As such, the variable *Appointments* measures the number of appointments each individual holds. Next, women may be less likely to be sidelined in provinces with higher levels of gender equality. I account for gender equality using the Gender-Related Development Index (GDI), which accounts for gender disparities in life expectancy rates, adult literacy rates, and standards of living. Higher GDI indicates lower levels of gender disparity. Finally, I include a control, *Available Positions*, for the number of available positions within each category in a legislative session and the *Number of Committees* for the number of committees in a given chamber. In legislative sessions where there are more positions available in a given category, legislators may be more likely to receive an appointment in that area.

ANALYSIS AND RESULTS

Given the dichotomous coding of my dependent variable, I use a logistic regression to estimate the likelihood of legislators being appointed to each type of committee. As previously stated, I examine the likelihood of appointment to four committee types, which results in four models, one for each dependent variable. The results are reported in Table 2.

To facilitate the interpretation of the hypotheses, I use simulated coefficients to calculate sets of predicted probabilities of the average female and male legislator being appointed to each committee type over a large range of numeric representation and the range of quota years (King, Tomz, and Wittenberg 2000). I graph the predicted probabilities surrounded by 95 percent confidence intervals in Figures 1 and 2. The figures allow us to visualize how the probability of appointment to a given committee type changes for male and female legislators for various scenarios. At first glance, it is clear from both Figures 1 and 2 that on average female legislators are more likely than male legislators to be appointed to WFCs and SICs but less likely to be appointed to ETCs or PCs. It is also clear, however, that the probability of appointment to each

of these committees changes as both numeric representation and the number of quota years increase.

TABLE 2

PROBABILITY OF COMMITTEE APPOINTMENT

	Women & Family Committees	Social Issues Committees	Economic & Trade Committees	Power Committees
<i>Female</i>	0.785 (0.651)	0.888** (0.320)	-0.645 (0.370)	-0.350 (0.315)
<i>Previous Term</i>	-0.224 (0.188)	-0.095 (0.069)	0.160* (0.071)	0.532*** (0.068)
<i>Appointments</i>	0.390*** (0.051)	0.437*** (0.023)	0.444*** (0.024)	0.397*** (0.023)
<i>Numeric Representation</i>	-4.948* (1.993)	-0.846 (0.517)	0.102 (0.537)	1.015* (0.516)
<i>Female X Numeric Representation</i>	8.364* (3.514)	1.029 (1.444)	-1.786 (1.693)	-2.681 (1.429)
<i>Quota Years</i>	-0.013 (0.116)	-0.027 (0.035)	0.003 (0.036)	0.027 (0.034)
<i>Female X Quota Years</i>	0.100 (0.220)	0.201* (0.093)	-0.022 (0.102)	-0.017 (0.089)
<i>Numeric Representation X Quota Years</i>	0.426 (0.516)	0.061 (0.143)	-0.042 (0.148)	-0.259 (0.139)
<i>Female X Numeric Representation X Quota Years</i>	-1.484 (0.950)	-0.734* (0.348)	0.429 (0.389)	0.378 (0.338)
<i>GDI</i>	-3.885 (4.573)	-2.498 (1.352)	-6.781*** (1.491)	-0.731 (1.315)
<i>Number of Committees</i>	-0.051*** (0.012)	-0.055*** (0.005)	-0.061*** (0.005)	-0.072*** (0.005)
<i>Available Positions</i>	0.070 (0.051)	0.024*** (0.003)	0.045*** (0.003)	0.031*** (0.003)
<i>Constant</i>	0.769 (3.702)	0.736 (1.098)	3.564** (1.209)	-0.250 (1.067)
<i>N</i>	1947	6064	6086	6086
<i>Log Likelihood</i>	-637.00692	-3757.083	-3437.9777	-3888.2584

Standard errors in parentheses

p<.05, ** p<.01, *** p<.001

Evaluating Support for the Marginalization Hypothesis

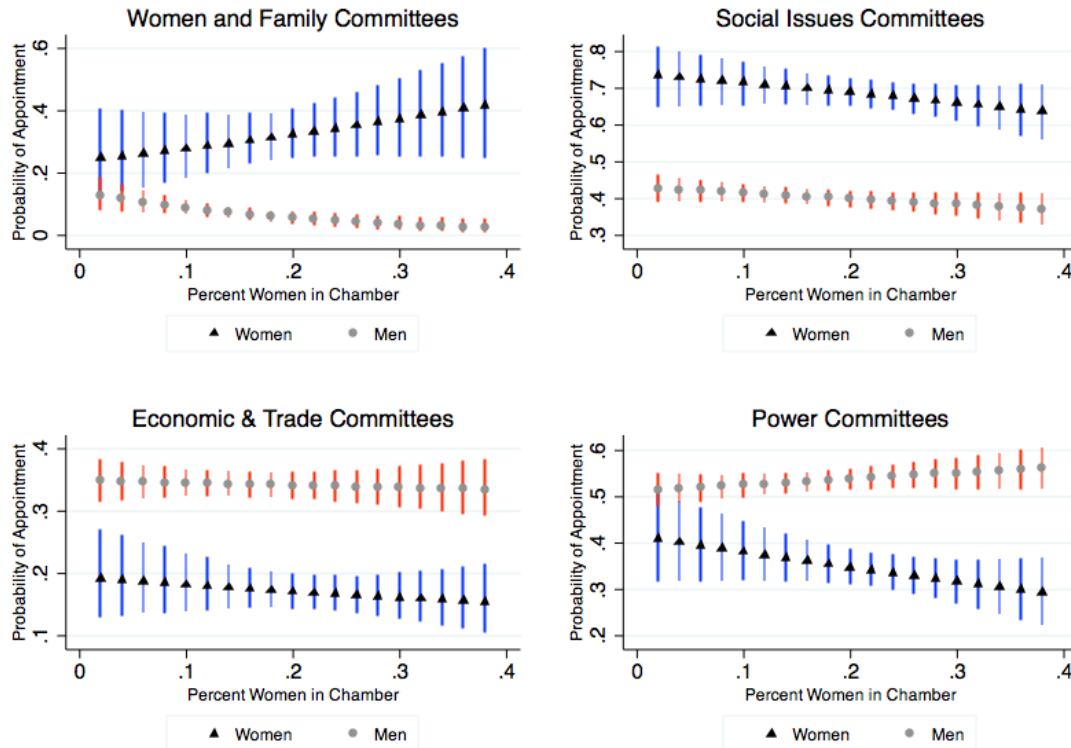
First, consider support for the *Marginalization Hypothesis*, which posits that when women, as a group, are newcomers to the legislature, increases in numeric representation may result in a higher probability of women being appointed to WFCs and SICs and a lower probability of being appointed to PCs and/or ETCs. To evaluate support for this hypothesis I calculate sets of predicted probabilities of male and female legislators being appointed to each of the four committee types as the percentage of women in the legislative chamber increases (see Figure 1). Given that the hypothesis is conditional on women being newcomers to the legislative chamber (and that I expect women to gain more access to powerful committee appointments when they are no longer newcomers), I hold the number of quota years at two (an equivalent of two legislative elections with gender quotas in provinces that hold elections every two years and one legislative election in provinces that hold elections once every four years).

Look first at the graph for WFCs on the top left of Figure 1. It is evident from this figure that women are more likely than men to be appointed to WFCs, and this relationship changes as the percentage of women in the legislative chamber increases. When women occupy only a small proportion of the legislative chamber, men and women are almost equally likely to be appointed to WFCs (the predicted probability of women occupying these posts is a bit higher than for men, but there is considerable overlap in the confidence intervals). As the percentage of women in the chamber increases, women become much more likely to be appointed to these posts, and the probability of men being appointed to these posts declines, thereby providing preliminary support for the *Marginalization Hypothesis*.

Similarly to the trend discussed above, women are more likely than men to be appointed to SICs. The graph on the top right of Figure 1 indicates that women, regardless of their numeric representation, are always more likely than men to be appointed to SICs and this relationship does not change significantly for women as the proportion of women in the chamber increases. (The predicted probabilities have a declining slope for women, but the difference is not statistically significant.) There is, however, a slight negative relationship between the proportion of women in the chamber and the probability of men being appointed to SICs, indicating that, as more women are elected to office, men are less likely to be relegated to these posts.

FIGURE 1

PROBABILITY OF COMMITTEE APPOINTMENTS AS NUMERIC REPRESENTATION INCREASES



Note: Figure 1 plots the predicted probability of committee appointments for male and female legislators as numeric representation increases. The figures demonstrate that as numeric representation increases female legislators are less likely to receive appointments to Economic and Trade Committees and Power Committees and more likely to receive appointments to Women and Family Committees, providing support for the *Marginalization Hypothesis*.

Contrast this trend with the probability of being appointed to an ETC or to a PC. The bottom panel in Figure 1 plots the predicted probability of being appointed to ETCs on the left and the predicted probability of being appointed to PCs on the right. A similar trend emerges for both committee types: men are more likely than women to be appointed to both ETCs and PCs. When women comprise a very small proportion of the legislative chamber, men are more likely to be appointed to these posts, and the gender difference increases as the proportion of women in the chamber increases. For example, when women comprise only 4 percent of the legislative chamber, men have a .52 probability of being appointed to a PC and women have a .40, a

difference of .12. As the proportion of women in the legislative chamber increases, gender differences likewise increase. Once women comprise 30 percent of the chamber, their probability of being appointed to a PC drops to .33; but for men, their probability of being appointed to a PC increases to .56. As a result, men have a .23 higher probability than women of being appointed to a PC. This relationship is the exact opposite of the relationship observed between increases in numeric representation and the probability of being appointed to a WFC.

Taken together, the relationships observed in Figure 1 provide support for the *Marginalization Hypothesis*. Figure 1 illustrates that when women are newcomers to the legislature, sharp increases in numeric representation result in a higher probability of women being appointed to WFCs and a lower probability of women being appointed to an ETC or to a PC.

Evaluating Support for the Political Empowerment Hypothesis

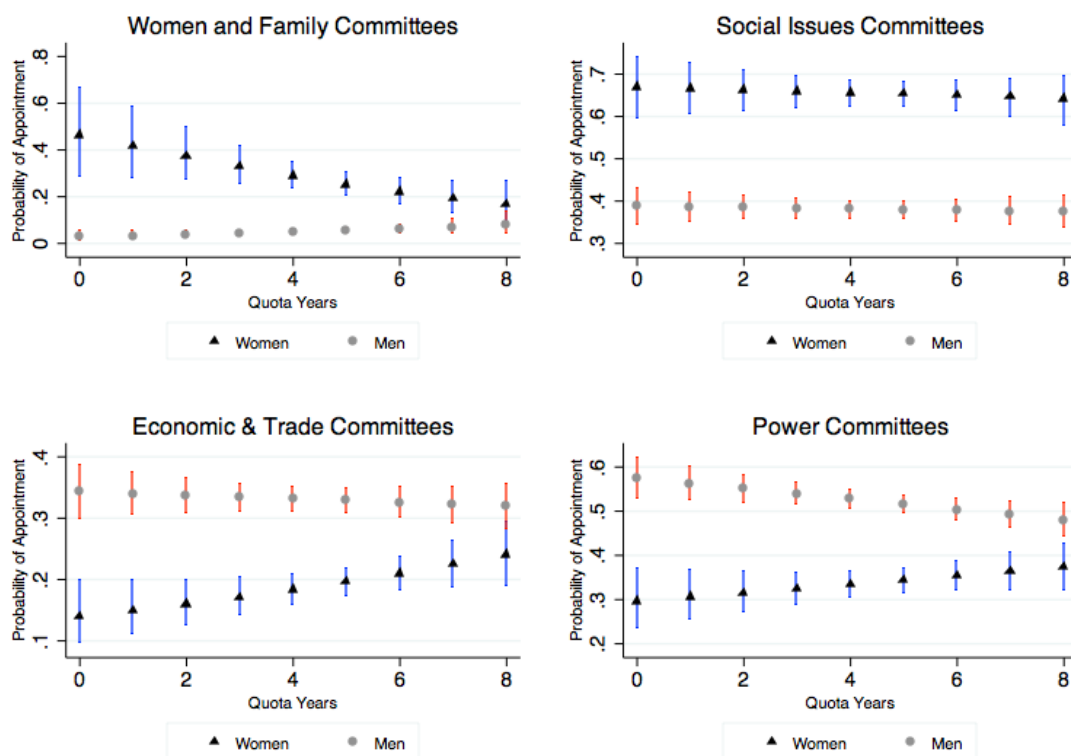
While increases in numeric representation may initially lead to the marginalization of female legislators, I argue that over time female legislators will gain more experience in the legislature, enabling them to overcome institutional barriers and develop institutional knowledge that will better equip them to work within the system to gain access to desirable committee appointments. More specifically, the *Political Empowerment Hypothesis* posits that conditional on women occupying a sizable proportion of seats in the chamber, as the duration of time increases since the adoption of gender quotas, women will be less likely to be appointed to WFCs and SICs and more likely to be appointed to PCs and/or ETCs. To assess support for this hypothesis, I calculate sets of predicted probabilities of male and female legislators being appointed to the four committee types as the number of years since the implementation of gender quotas increases (see Figure 2). Given that the hypothesis is conditional on women holding a significant portion of the legislative seats in the chamber, I hold the proportion of female legislators at .30 and all other variables at their means.

Look first at the top left corner of Figure 2. Here I present the predicted probabilities of male and female legislators being appointed to WFCs. It is evident from the figure that female legislators are more likely than male legislators to be appointed to this type of committee. After only one session after quota implementation (when the proportion of women in the chamber is held constant at .30), women have approximately a .45 probability of being appointed to a WFC

whereas their male counterparts have less than a .10 probability. The figure demonstrates that this trend changes over time: as time passes since the implementation of quotas, the probability of women being appointed to WFCs declines and the probability of men being appointed to these committees increases. Once quotas have been in place for seven sessions, the data predict no difference between the probability of male and female legislators being appointed to WFCs. This trend suggests that, over time, women are less likely to be pigeonholed into traditionally feminine committees.

FIGURE 2

PROBABILITY OF COMMITTEE APPOINTMENTS AS THE NUMBER OF QUOTA YEARS INCREASES



Note: Figure 2 plots the predicted probability of committee appointments for male and female legislators as the number of quota years increases. The figures demonstrate that as the number of quota years increases female legislators are more likely to receive appointments to Economic and Trade Committees and Power Committees and less likely to receive appointments to Women and Family Committees, providing support for the *Political Empowerment Hypothesis*.

Turning next to women's appointments to SICs (in the top right corner of Figure 2), we see that women's appointments to these committees are not influenced by the number of quota years. Similar to the results presented in Figure 1, Figure 2 demonstrates that female legislators are more likely than male legislators to be appointed to SICs and that this likelihood does *not* change as the number of quota years increases. In fact, the trajectory of the predicted probabilities is flat for both male and female legislators as the number of quota years increases.

Third, look at the bottom panel of Figure 2 to examine women's appointments to ETCs and PCs. As before, the trends for both of these committees are similar to one another but are in sharp contrast to the trend reported in the top panel of Figure 2. The bottom panel of Figure 2 reveals that, initially, male legislators are far more likely to be appointed to both ETCs and PCs than are their female colleagues. As the number of years since quota adoption increases, this relationship dissipates. Increases in quota years result in a significant decline in the probability that male legislators will be appointed to these committees and a significant increase in the probability that female legislators will be so appointed. Strikingly, as the number of quota years increases, the probability of appointment for male and female legislators begins to converge until there is little statistical difference in the probability of male and female legislators being appointed to these posts. The data predict that the adoption of gender quotas does not result in immediate positive outcomes for women but that, over time, women can achieve access to powerful committee appointments.

Taken together, the change in predicted probabilities of appointment to WFCs, ETCs, and PCs as the number of quota years increases provides strong support for the *Empowerment Hypothesis* and tells an encouraging story about women's influence in the legislature. Together, these three sets of findings demonstrate that, over time, female legislators gain access to valuable resources such as powerful committee appointments within the legislature.

DISCUSSION

This paper offers exciting results, which indicate that while women, as newcomers to a male-dominated legislative arena, may initially be marginalized and passed over for powerful committee appointments, as numeric representation becomes institutionalized in the legislative system women may learn to navigate the legislature and gain access to powerful posts. This

result suggests that, while the adoption of gender quotas may result in initial backlash and sidelining of female legislators, with time the implementation of gender quotas can result in the institutional integration of female representatives.

The only set of results that do not provide support for this argument is women's appointments to SICs. Despite increased access to PCs and ETCs, women tend to be overrepresented in SICs, and this does not change significantly as numeric representation increases or as the number of quota years increases. Women's overrepresentation on SICs may be a product of a combination of factors.

First, women's overrepresentation on SICs may be a product of gender bias and stereotypes that view women as being better suited to serve in a traditionally feminine capacity. As a result of these stereotypes, men may be more likely to appoint women to SICs as a way of pigeonholing them. A deputy from the Federal District explains that "just like at work, there are also [stereotypes] when it comes to committee politics. Committees related to services, education, women, health, social advancement, all have women as a majority. Because that is where men think women should be and women too."¹⁸ Comments from a Salta deputy reinforce this perspective: "Here, you do not get the job by ability. Here the personnel and women are designated in a different way. That makes the discrimination easy to see. You don't really see a number of women in relevant positions."¹⁹

Second, women could be consistently self-selecting into these committees, possibly because they genuinely prefer to serve on SICs (Carroll 2008). In her survey analysis of national legislators in Latin America, Schwindt-Bayer (2010) finds that women are more likely than men to prioritize social issues and as a result prefer to be placed on SICs.

Third, overrepresentation in these areas may be a product of women's background and training prior to entering the legislature. A senator from Mendoza suggests that variations in committee appointments are a product of professional experience and expertise: "We have more female professors who are in the Education Committee, and, for example, in the General Legislation and Institutional Issues the majority are lawyers.... committee appointments have to do more with expertise than with gender."²⁰

¹⁸ Interview with Federal District deputy from a small third party, July 16, 2013.

¹⁹ Interview with Acción Cívica y Social legislator, Salta, July 10, 2013.

²⁰ Interview with FpV senator, Mendoza, June 25, 2013.

If women's overrepresentation in SICs is a product of women self-selecting because of their preferences and preparedness to serve on these committees, gender bias in committee appointments is a product of a larger gender bias in society. Stereotypes about men's and women's roles in the public and private sector track women into a subset of careers (social issues and traditional feminine areas) from an early stage. The employment and reinforcement of gender roles in society result in men and women developing different skills, priorities, and/or preferences. To the extent that women's committee appointments are a product of more entrenched patterns in society, we should not expect women's committee appointments to change over time as a product of increases in the number of quota years. This change would require more fundamental changes in society—not only in the legislative arena. A Mendoza deputy articulates this point: “What happens is that stereotypes are established in a way that people see as natural, they don't see it, it is not visible. That is why it is necessary to raise awareness and consciousness, to remove the innocence and make sure that it [the way that stereotypes are established] is seen.... We are in a historical moment where we are gaining gender consciousness, but we have to intensify it, talk about it, demonstrate it, and teach it in schools. We have to make children picture both sexes with same rights—different in sex, but equal in rights. The little boy can wash the dishes, and the little girl can play with a car.”²¹

CONCLUSION

While scholars and practitioners have long debated the benefits and pitfalls of gender quotas (Mansbridge 2005; Kittilson 2005; Jones 2005), it is undeniable that the implementation of gender quotas worldwide has been instrumental in providing women access to the legislative arena. Still, many have raised concerns about women's lack of institutional incorporation and their (in)ability to influence the legislative process once gender quotas enable their election to political office. Multiple studies provide evidence for these concerns, demonstrating that women do not receive the same legislative appointments as their male colleagues and that they are more likely to be excluded as the proportion of women in the chamber increases. Are female legislators destined to remain on the sidelines, or is it possible for them to make lasting gains over time? In this research I argue that, although women's debut to the legislative arena may be

²¹ Interview with Mendoza, FpV deputy, Mendoza, June 26, 2013.

colored by marginalization, with time and persistence women's role in the legislature is likely to change.

In particular, I suggest that as newcomers, women may face discrimination, lack necessary technical and legislative skills, and avoid asking and negotiating for what they want. For these reasons, the adoption of gender quotas accompanied by sharp increases in numeric representation may result in systematic differences between female and male legislators' committee appointments. Consistent with this argument, this research demonstrates that when women are newcomers, as numeric representation increases they are less likely to receive valuable committee appointments and are more likely to receive appointments to committees that address stereotypical feminine issues.

Nevertheless, the outlook for women's access to legislative power may not be completely grim. Rather, this research suggests that, in time, women's access may improve. Discrimination in the chamber may dissipate, women will develop the technical and legislative skills necessary to adeptly maneuver in the legislative system, and women may become more inclined to ask for the committee appointments they want. Together, these changes will facilitate women's access to powerful appointments. In particular, this research provides evidence that, over time, women may become much more likely to receive powerful committee appointments on both ETCs and PCs, giving them influence over important policy decisions and preparing them for other important policy appointments in the government.

The downside is that this research indicates the amount of time necessary for women to approach equal footing with male legislators is not insignificant. The results presented here estimate that it took women almost fourteen years after the implementation of quotas before they started receiving similar committee appointments to those of their male counterparts. Nonetheless, these findings illustrate the instrumental role of gender quota laws and their ongoing importance in facilitating opportunities for women. When reflecting on the consequences of the quota law, a Federal District deputy argues, "The quota law has been really important. We still need to defend it because some people want to remove it, and that would be taking a step back. The cultural change still is not over; but yes, we have advanced. There is larger women's representation in places where women were not before."²²

²² Interview with Federal District deputy from a small third party, July 16, 2013.

Nonetheless, even when women receive similar committee appointments to men, they still have a long way to go to achieve equal representation. Countless interviews indicate that women lack equal access to legislative leadership positions and that men continue to be unfairly privileged in this regard. A female deputy from the Federal District articulates this pervasive concern: “There is still a lack of equality. If we are going to elect someone, it has to be because of qualifications. We are still lacking that step. We have to keep working and empowering women for that.”²³ If the results from this research can be generalized to make predictions about women’s ability to obtain leadership positions, they suggest that, with time, women will gain access to the upper echelons of legislative leadership. Unfortunately, for now, it is premature to conclude that women’s ability to gain access to powerful committee appointments also translates to their ability to obtain access to leadership posts.

²³ Interview with Federal District deputy from a small third party, July 16, 2013

APPENDIX

COMMITTEE CODING FOR DEPENDENT VARIABLE

District	Women & Family	Social Issues	Economic and Trade	Power Committees
Federal District	Family, Women, & Minority ²⁴	Health; Education, Science, & Technology; Social Advancement & Economic Activities; Culture & Communication; ²⁵ Human Rights, Guarantees, & Anti-Discrimination; Equal Opportunities; Mental Health	Treasury & Budget; ²⁶ Economic Development, Mercosur, & Employment Politics	General Legislation & Labor; Treasury & Budget; ²⁷ Constitutional Issues
Buenos Aires Senators	Children & Family Issues ²⁸	Public Health; Education & Culture; Interior Advancement & Development; Social Legislation; Human Rights & Guarantees; Addiction Prevention	Budget & Taxes; Treasury; Foreign Commerce; Mercosur Politics & Regional Integration	General Legislation I; General Legislation II; Budget & Taxes; Treasury; Constitutional Issues & Agreements
Buenos Aires Deputies	Childhood, Adolescence, Family, & Women ²⁹	Public Health; Education & Culture; Cultural Issues; Human Rights & Guarantees; Prevention & Control of Human Rights Abuses; Drug Dependency & Trafficking; Addiction Prevention; Development & Human Rights	Budget & Taxes; Treasury; Foreign Commerce; Mercosur; Regional & Interior Issues	General Legislation I; General Legislation II; Budget & Taxes; Treasury; Constitutional & Justice Issues
Chaco	None	Social Assistance, Public Health, Drug Addiction Prevention, Family & Population Development; Education & Culture; Land, Human & Rural Habitat Regularization & Development; Human Rights; Human Development & Health	Treasury & Budget	General Legislation & Justice; Treasury & Budget; Constitutional Issues
Chubut	None	Social & Health Legislation; Social, Labor, & Human Rights Legislation; Human Development & Environment	Treasury & Public Works	General Legislation, Health, Culture, & Education; Treasury & Public Works; Constitutional & Justice Issues
Córdoba Senators	Family & Minors	Public Health; Education & Culture; Youth Rights, Sports, Recreation, & Politics of Drug Addiction Prevention; Human Rights & Consumer Rights ³⁰	Budget & Treasury	General Legislation; Budget & Treasury; Constitutional, Institutional, & Municipal
Córdoba Deputies	None	Public Health; Culture, Education, Science, & Technology	Economy	General Legislation; Economy; Constitutional & Municipal Issues, Petitions, & Power
Córdoba Unicameral	Family & Minors	Public Health; Education & Culture; Youth Rights, Sports, Recreation, & Politics of Drug Addiction Prevention; Justice, Agreements & Human Rights	Budget & Treasury	General Legislation; Budget & Treasury; Constitutional, Institutional, & Municipal

²⁴ Formerly Women, Childhood, Adolescence, & Youth Committee

²⁵ Formerly Culture Committee

²⁶ Formerly Budget, Hacienda, Financial Administration & Tributary Politics Committee

²⁷ Formerly Budget, Hacienda, Financial Administration & Tributary Politics Committee

²⁸ Formerly Childhood, Adolescence, & Family Committee

²⁹ Formerly Childhood, Adolescence, & Family Committee. In 1998 the Women's Issues Committee was created. In 2002 these two committees were consolidated to make the Childhood, Adolescence, Family, & Women Committee.

³⁰ Formerly Justice, Human Rights & Agreements Committee

Corrientes Senators	None	Education & Culture	Taxes & Budget; Treasury & Public Works	Legislation & Constitutional Issues; Taxes & Budget; Treasury & Public Works
Corrientes Deputies	None	Labor, Public Health, & Social Assistance; Public Education & Culture; Human Rights, Security, Constitutional Guarantees, & User & Consumer Rights	Budget & Taxes; Treasury	Constitutional Issues & General Legislation; Budget & Taxes; Treasury; Constitutional & Legislative Affairs
Entre Ríos Deputies	None	Public Health; Education; Culture; Human Rights; Addictions & Drug Dependency	Treasury, Budget, & Accounts; Commerce, Cooperativism, & Mercosur	Legislation; Treasury, Budget, & Accounts; Constitutional Issues
Formosa	None	Public Health & Drug Addiction Issues; Social Wellbeing, Culture, & Education; Development & Advancement of Tourist Affairs	Economic Issues & Public Works; Regional Issues, Tariff Free Zone, Mercosur, & International Agreements	Legislation & Constitutional Issues; Economic Issues & Public Works
Jujuy	None	Public Health; Culture & Education; Social Issues	Economy; Finance	General Legislation; Economy; Finance; Institutional Issues
Mendoza Senators	None	Health; Culture, Education, Science & Technology; Social Issues & Labor	Economy & Foreign Commerce; Treasury & Budget	Legislative & Constitutional Issues; Economy & Foreign Commerce; Treasury & Budget; Rights & Guarantees
Mendoza Deputies	None ³¹	Public Health; Culture & Education; Social & Labor Legislation; Youth	Economy, Commerce, & Consumption; Treasury & Budget	Economy, Commerce, & Consumption; Treasury & Budget; Legislation & Constitutional Issues
Misiones	Gender, Family, and Youth	Social Issues, Public Health, & Education	Budget, Taxes, & Treasury	General Legislation & Justice; Budget, Taxes, & Treasury; Constitutional & Municipal Issues, & Political Justice
Río Negro	None ³²	Culture, Education, & Social Communication; Social Issues	Planning, Economic Issues, & Tourism; Budget & Treasury	Constitutional Issues & General Legislation; Planning, Economic Issues, & Tourism; Budget & Treasury
Salta Senators	None	Public Health, Social Security, & Sports; Human Rights & Indigenous Issues; Drug Addiction, Trafficking, & Consumption	Economy, Public Finance, & Budget; Border & Limits	General Legislation for Labor & Provisional Regime; Economy, Public Finance, & Budget
Salta Deputies	None	Health; Education; Culture & Sports; Human Rights	Bicameral for Investment Accounts; Treasury & Budget; Mercosur & Regional Integration	General Legislation; Bicameral for Investment Accounts; Treasury & Budget
Santa Cruz	None	Social Action, Public Health, & Housing; Education, Culture, Science, & Technology	Budget & Treasury	General Legislation; Budget & Treasury; Constitutional Issues, Justice, Power, Petitions, & Regulations

³¹ The Mendoza Chamber of Deputies created a special committee focused on gender in 2009. Every female in the Chamber of Deputies was a member of the committee in 2009.

³² In 2000 Río Negro created the Special Committee on the Study of Gender. It is not a standing committee and does not meet on a regular basis.

Santa Fe Senators	None	Public Health & Environment Protection; Education; Culture & Social Communication	Economy, Agriculture, Livestock, Industry, & Commerce; Budget & Treasury; Foreign Commerce	Constitutional Issues & General Legislation; Economy, Agriculture, Livestock, Industry, & Commerce; Budget & Treasury
Santa Fe Deputies	None	Public Health & Social Assistance; Education; Culture & Social Communication; Human Rights & Guarantees	Budget & Treasury	Constitutional Issues & General Legislation; Budget & Treasury
Tucumán	Family, Minors, & Disabled	Public Health; Education & Culture; Social Legislation & Public Health; Family, Minors, & Disabled; Human Rights; Narco-Trafficking & Drug Dependency; Prevention & Assistance for Addictions	Economy & Production; Treasury & Budget	General Legislation; Economy & Production; Treasury & Budget; Constitutional & Institutional Issues

REFERENCES

- Babcock, Linda, and Sarah Laschever. 2007. *Women Don't Ask*. New York, NY: Batman Books.
- Bækgaard, Martin, and Ulrik Kjaer. 2012. "The Gendered Division of Labor in Assignments to Political Committees: Discrimination or Self-Selection in Danish Local Politics?" *Politics & Gender* 8 (4): 465–82.
- Barnes, Tiffany D. 2013. "Gender and Legislative Preferences: Evidence from the Argentine Provinces." *Politics & Gender* 8 (4): 483–507.
- Bauer, Gretchen, and Hannah E. Britton, eds. 2006. *Women in African Parliaments*. Boulder, CO: Lynne Rienner.
- Beckwith, Karen. 2007. "Numbers and Newness: The Descriptive and Substantive Representation of Women." *Canadian Journal of Political Science* 40 (1): 27–49.
- Brown, Alice, Tahnya Barnett Donaghy, Fiona Mackay, and Elizabeth Meehan. 2002. "Women and Constitutional Change in Scotland, Wales and Northern Ireland." *Parliamentary Affairs* 55 (1): 71–84.
- Carroll, Susan. 2008. "Committee Assignments: Discrimination or Choice?" In *Legislative Women: Getting Elected, Getting Ahead*, ed. Beth Reingold. Boulder, CO: Lynne Rienner, 135–56.
- Eagly, Alice H. 1987. *Sex Differences in Social Behavior: A Social Role Interpretation*. Hillsdale, NJ: Erlbaum.
- _____. 1995. "The Science and Politics of Comparing Women and Men." *American Psychologist* 50 (3): 145–58.
- Eagly, Alice H., Mary C. Johannesen-Schmidt, and Marloes L. van Engen. 2003. "Transformational, Transactional, and Laissez-Faire Leadership Styles: A Meta-analysis Comparing Women and Men." *Psychological Bulletin* 129 (4): 569–91.
- Fenno, Richard. 1997. *Learning to Govern*. Washington, DC: Brookings.
- Franceschet, Susan, and Mona Lena Krook. 2008. "Measuring the Impact of Quotas on Women's Substantive Representation: Towards a Conceptual Framework." Paper presented at the annual meeting of the American Political Science Association, Boston, MA, August 28–31.
- Franceschet, Susan, and Jennifer Piscopo. 2008. "Gender Quotas and Women's Substantive Representation: Lessons from Argentina." *Politics & Gender* 4 (3): 393–425.

- Frisch, Scott A., and Sean Q. Kelly. 2003. "A Place at the Table: Women's Committee Requests and Women's Committee Assignments in the U.S. House." *Women & Politics* 25 (3): 1–26.
- Grey, Sandra. 2006. "Numbers and Beyond: The Relevance of Critical Mass in Gender Research." *Politics & Gender* 2: 491–530.
- Heath, Roseanna Michelle, Leslie A. Schwindt-Bayer, and Michelle M. Taylor-Robinson. 2005. "Women on the Sidelines: Women's Representation on Committees in Latin American Legislatures." *American Journal of Political Science* 49 (2): 420–36.
- Heilman, Madeline E. 1995. "Sex Stereotypes and Their Effects in the Workplace: What We Know and What We Don't Know." *Journal of Social Behavior and Personality* 10 (6): 3–26.
- IPU (Inter-Parliamentary Union). 2012. *Women in National Parliaments*. Available from: <http://www.ipu.org/wmn-e/world.htm> (September 1, 2013).
- Jones, Mark P. 2005. "The Desirability of Gender Quotas: Considering Context and Design." *Politics & Gender* 1 (4): 645–52.
- _____. 2009. "Gender Quotas, Electoral Laws, and the Election of Women: Evidence from the Latin American Vanguard." *Comparative Political Studies* 42 (1): 56–81.
- Kerevel, Yann, and Lonna Rae Atkeson. 2013. "Explaining the Marginalization of Women in Legislative Institutions." *Journal of Politics* 75 (4): 980–92.
- King, Gary, Michael Tomz, and Jason Wittenberg. 2000. "Making the Most of Statistical Analyses: Improving Interpretation and Presentation." *American Journal of Political Science* 44 (2): 347–61.
- Kittilson, Miki Caul. 2005. "In Support of Gender Quotas: Setting New Standards, Bringing Visible Gains." *Politics & Gender* 1 (4): 638–45.
- Mansbridge, Jane. 2005. "Quota Problems: Combating the Dangers of Essentialism." *Gender & Politics* 1 (4): 622–38.
- O'Brien, Diana Z. 2012. "Gender and Select Committee Elections in the British House of Commons." *Politics & Gender* 8 (2) 178–204.
- Schwindt-Bayer, Leslie A. 2009. "Making Quotas Work: The Effect of Gender Quota Laws on the Election of Women." *Legislative Studies Quarterly* 34 (1): 5–28.
- _____. 2010. *Political Power and Women's Representation in Latin America*. Oxford: Oxford University Press.

- Thames, Frank C., and Margaret S. Williams. 2013. *Contagious Representation: Women's Political Representation in Democracies around the World*. New York, NY: New York University Press.
- Thomas, Sue. 1994. *How Women Legislate*. Oxford: Oxford University Press.
- Towns, Ann. 2003. "Understanding the Effects of Larger Ratios of Women in National Legislatures: Proportions and Gender Differentiation in Sweden and Norway." *Women & Politics* 25 (1): 1–29.
- Tula, María Inés. 2008. "La Ley de Cuotas en la Argentina." In *Mujeres y Política en América Latina: Sistemas Electorales y Cuotas de Género*, ed. Nélide Archenti and María Inés Tula. Buenos Aires: Heliasta, 31–53.
- Zetterberg, Pär. 2008. "The Down Side of Gender Quotas? Institutional Constraints on Women in the Mexican State Legislatures." *Parliamentary Affairs* 61 (3): 442–60.