



KELLOGG INSTITUTE
FOR INTERNATIONAL STUDIES

Annual Report

2016-2017



exploring **DEMOCRACY** *and* **HUMAN DEVELOPMENT**



UNIVERSITY OF
NOTRE DAME

Keough School of Global Affairs



Photo by C. J. Humes '17
(environmental sciences)

In the doorway of her home near Fort Portal, Uganda, a woman welcomes guests with an offering of maize. “She took such pride in herself and her family,” said Humes, who interviewed her on a Kellogg/Kroc Research Grant for his International Development Studies capstone project on the social determinants of clean water.

Photos not otherwise credited by or courtesy of:

- Yunyi Bai
- Matt Cashore
- Karen Graubart
- Barbara Johnston
- Tracy Kijewski-Correa
- Luke Maillie
- Emerson Matus Quintos
- Peter Ringenberg
- Carrie Shoemaker
- Merrick Siebenaler
- Steve Toepp
- Grace Watkins
- Katie Whitcomb

1 From the director

RESEARCH EXCELLENCE

- 2 Faculty fellow research
- 4 Visiting fellow innovation
- 6 Intellectual community
- 8 Scholarly products

EDUCATIONAL OPPORTUNITIES

- 10 Undergraduate scholarship
- 12 Undergraduate fieldwork
- 14 Graduate education

BUILDING LINKAGES AROUND THE WORLD

- 16 Human development and the Keough School
- 18 Research and community engagement
- 20 Partnerships
- 22 Engaging the world

STEWARDSHIP AND KELLOGG COMMUNITY

- 24 Financial overview
- 26 People

SOMETIMES WHEN HIKING UP A MOUNTAIN TRAIL it’s hard to get a good view of where we are: for all the effort of climbing, still the trees block the horizon, a rock formation obscures the peak we aim to reach, or our eyes are fixed on our feet to navigate the terrain’s irregularities. But once in a while, coming out onto a high ridge, we get a glimpse of the whole way, taking in the awe-inspiring panorama to which the arduous path behind has led us.

In the same way, while we are immersed in the demanding week-to-week activity of the Kellogg Institute it can be difficult to see clearly where we are headed overall—whether a bold research initiative will bear good fruit, how a promising student’s academic and personal growth will unfold, where an exciting new encounter or partnership will take us.

In the past year, we had a welcome opportunity to engage in a strategic planning process that allowed us to lift our eyes from our daily steps forward and to look further into the distance toward our goals and priorities for the next five years. The broad and open consultative process contributed to crafting an ambitious, exciting agenda for the Institute’s future.

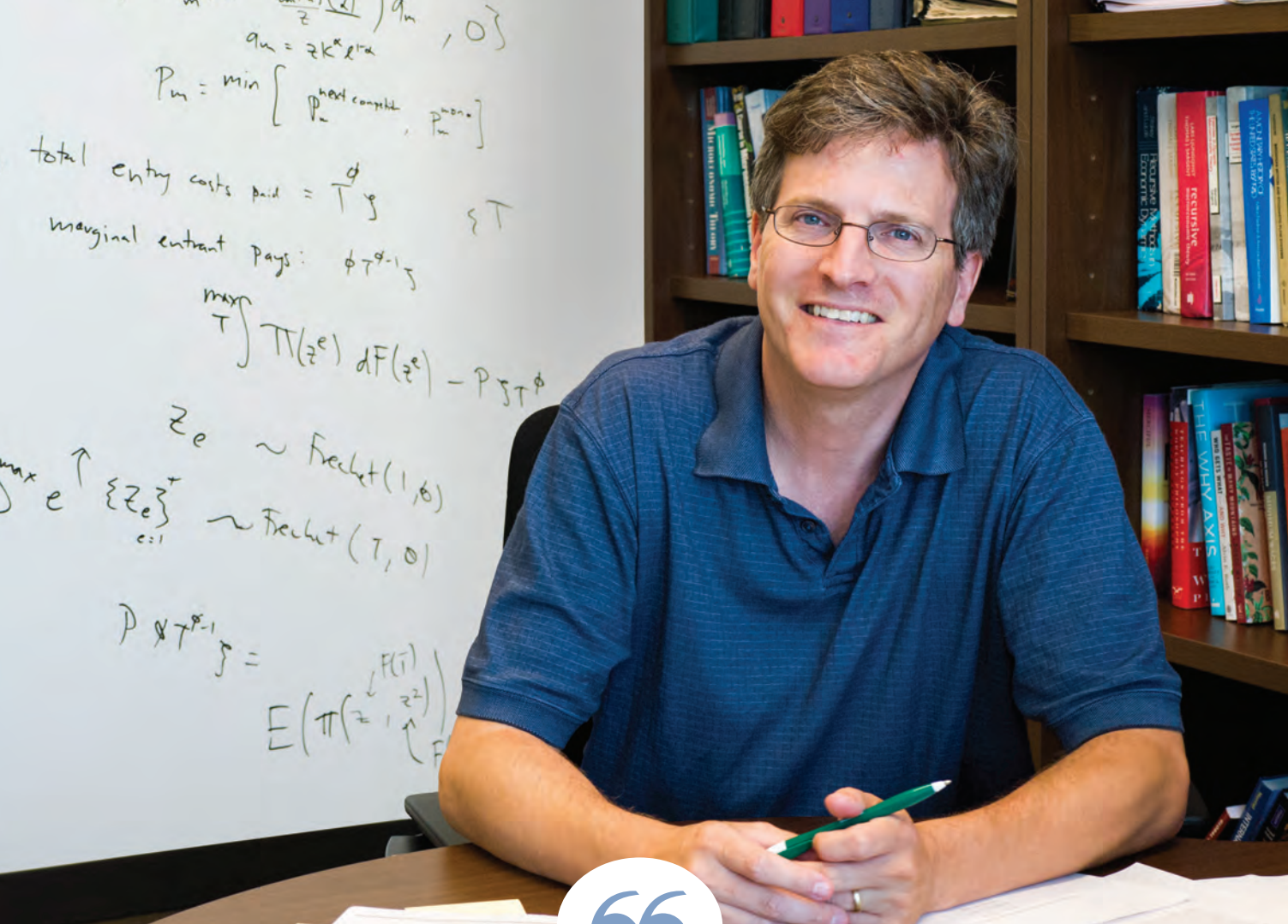
Aiming to reaffirm Kellogg’s core identity even while opening up to the new possibilities and responsibilities that arise out of the Institute’s place in the new Keough School of Global Affairs, the strategic plan revolves around three axes: fostering outstanding research on our core themes of democracy and human development, offering unparalleled educational opportunities for both graduate and undergraduate students, and pursuing key linkages and partnerships that allow us to engage the world far beyond the University’s walls.

These central strategic goals give coherence and direction to our intellectual community. In the pages that follow, I invite you to see the goals on display, embodied tangibly in the people of the Institute and their inspiring, groundbreaking work.

I am deeply grateful for all who contributed to the mission of the Institute in the past year. And I hope that you continue to walk with us in the coming year as well, because Kellogg’s future augurs even more breathtaking vistas as our strategic plan leads us to new heights.



Paolo Carozza
Director



Kellogg has helped us assemble a group of economists at Notre Dame who care about micro development, macro development, and the connection between the two.

—Joseph Kaboski
Faculty Fellow

Faculty Fellows Conduct Innovative Research on Global Challenges

At the center of the Kellogg Institute’s initiatives are more than 100 faculty fellows from across the University. Their research on critical global challenges—with a focus on Kellogg themes of democracy and human development—informs academic debates and policy around the world.



Faculty Fellow **Joseph Kaboski** has spent his entire career as an economist grappling with one very large and vexing question: how can countries in the developing world move their citizens out of poverty?

“To help figure out how to make the next 50 years in Uganda look like the last 50 years in South Korea,” he says, “we need to look at how thousands of daily individual decisions combine to affect a nation’s overall economic health.”

In a wide-ranging body of work motivated by his Catholic faith, Kaboski frequently focuses on what happens to microeconomic policies and programs when they are scaled up economy-wide.

He won the 2012 Frisch Medal, one of the top prizes in the field of economics, for just such work: evaluating a microfinance initiative in Thailand that used government funds to create nearly 80,000 village banks.

More important to Kaboski than external recognition, however, is his belief that it is precisely this kind of scholarly analysis—one that makes connections between individuals’ behavior and desirable macroeconomic

policy—that holds the key to advances in development throughout the globe.

A current project in Uganda where he is working with credit-constrained entrepreneurs exemplifies this approach to development economics—but he acknowledges it is complicated.

“When I’m with development economists, the macroeconomists consider me a microeconomist and then vice-versa,” he says. “There’s a particular method and culture for each of the fields, and it can feel at times that I am a jack of all trades and a master of none.”

But he is convinced that melding macro and micro will help lay the foundation for policies that can advance development.

“There are intellectual waves in every field,” he says. “One wave that pushed development economics forward was collecting data in the field and running experiments. While the benefits of this strategy were huge, scholars realized that microeconomics is limited.

You need to combine experiments with models, and then you need to think about what happens when you apply a policy to an entire country.”

7 FACULTY FELLOWS

win prestigious national fellowships and awards:

- ACLS
- FULBRIGHT
- LUCE
- NEH
- NSF

learn more at: kellogg.nd.edu/AR2017/research



Some of the best work on religion in politics globally is being done at Notre Dame so Kellogg was the obvious place to come for my book.

—Amy Erica Smith
Visiting Fellow

Visiting Fellows Advance Understanding of Democracy and Human Development

Outstanding scholars and practitioners from around the world energize our intellectual community through the signature Visiting Fellows Program. In addition to advancing independent research on Kellogg themes, visiting fellows collaborate with faculty, enrich student learning, and connect Notre Dame to an international network of scholars and institutions.



“I want to understand how citizens can help to make democracy better,” says Visiting Fellow **Amy Erica Smith**. A political scientist with expertise in Latin American and Brazilian politics, she focuses her work on mass political behavior.

“Fundamental to my research is how citizens learn about and come to understand politics and hopefully do better jobs of selecting representatives,” she says.

She made impressive use of her Institute fellowship, making many contacts, organizing several events, investigating future projects—and writing an entire book.

“Some of the best work on religion in politics globally is being done here at Notre Dame so Kellogg was the obvious place to come for my book project,” she says.

“Crosses and Culture Wars” explores how and why evangelical and Catholic congregations and religious leaders have mobilized in Brazil and the implications for the country’s democracy.

“In Brazil, the culture wars are not being driven by political parties,” Smith says. “Instead, they’re driven by Catholic and Protestant clergy who

are trying to differentiate themselves as they compete for church members.”

In spring 2017, in addition to her writing, Smith co-organized an innovative conference with Brazilian Fulbright Distinguished Chair in Democracy and Human Development **Henrique Carlos de Oliveira de Castro**, back at Brazil’s Universidade Federal do Rio Grande do Sul (UFRGS) after a fall semester at Kellogg.

The intercontinental event was held simultaneously via videoconferencing at Kellogg and at UFRGS. Participants utilized public opinion research to address the challenges Brazil faces in the provision of effective governance for the development of all its citizens.

“The possibility for international collaboration was fantastic,” Smith says. “Bringing together junior and senior scholars studying Brazil from across the US, combined with Brazilianists in Brazil was really, really interesting. It’s a kind of cross-national exchange you don’t get very much.”

“What has been really positive at Kellogg has been meeting people—not only those that I came here intending to meet, but others that I didn’t know were here.”

8
VISITING FELLOWS

5
COUNTRIES
Argentina, Brazil, Mexico, Singapore, and US

4
DISCIPLINES
Anthropology, Economics, Political Science, Sociology

3
REGIONS OF STUDY
Africa, Asia, Latin America

1
JOURNALIST

learn more at: kellogg.nd.edu/AR2017/innovation



The workshop brought together people from two different strands of scholarship who otherwise weren't engaged in dialogue. Our conversations were instrumental in developing the central elements of the book.

—**Jaime Pensado**
Faculty Fellow



Simona Beretta, Former Visiting Fellow

Deepening Intellectual Community

Intellectual community grows and flourishes at Kellogg in multiple individual interactions—and in distinctive gatherings designed to bring together scholars, students, and practitioners in a lively mix that sparks provocative dialogue and engenders new scholarly projects.

Where do some of the most intense—and useful—scholarly discussions take place at the Kellogg Institute? In 2016–17, one answer would be in four book workshops convened by Kellogg fellows to gain feedback on work in progress or to hash out the themes of a coedited volume.

Book workshops focus on manuscripts at various stages of completion. Authors have the liberty to invite precisely the coauthors and/or experts they think will be most helpful to the project.

Kellogg Director **Paolo Carozza** brought together 16 contributors to his edited volume, “Human Dignity and Human Development.”

“You can get the perspectives of a variety of people from a distance—but the advantage of a book workshop is that they are all in the same room for a sustained period,” he says.

“The ideas just fly! We were able to make so much progress in a short period of time.”

Faculty Fellow **Jaimie Bleck** and coauthor Nicolas van de Walle presented the first draft of “Electoral Politics in Africa: Change and Continuity” to four top experts on African

elections, as well as to Visiting Fellow **Lauren Honig** and several doctoral students.

“It prompted us to think deep and hard about our arguments and the evidence we wanted to present,” says Bleck. “The feedback enabled us to submit a significantly better draft of the book to Cambridge University Press, where it is under contract.”

Faculty Fellow **Jaime Pensado**’s coedited volume, “Mexico Beyond 1968: Revolutionaries, Radicals, and State Repression during the 1960s and 1970s,” is now under review at University of Arizona Press.

“Our workshop played a fundamental role in bringing together an intimate group of critical scholars,” he says. “The discussions really framed the central arguments of the book.”

Visiting Fellow **Amy Erica Smith** was nervous about having leading Latin Americanists “tear apart” her manuscript on Brazil’s culture wars (see p. 5), but ended up delighted.

“Over eight hours you learn a lot, and thinking it through, thinking about theoretical implications—it was just fantastic.”



The ability to brainstorm with leaders in the field was invaluable. Our dialogue and conversations during the book workshop increased the quality of our book immensely.

—**Jaimie Bleck**
Faculty Fellow

learn more at: kellogg.nd.edu/AR2017/community



This was one of the most successful and creative scholarly events I have been involved with...I am not surprised that Kellogg understood how important this kind of experimental group work could be.

—Karen Graubart
Faculty Fellow

Promoting Scholarly Creativity and Production

Scholarly production takes many forms—monographs, collected volumes, journal articles, working papers. At the Kellogg Institute, we create space and provide resources for our faculty and visiting fellows to explore new projects, bring them to fruition, and share them in the wider intellectual community.

When Faculty Fellow **Karen Graubart** and fellow historians founded La Patrona Collective for Colonial Latin American Scholarship, they had in mind a new way of encouraging production in their field.

They envisioned an “archival practicum” that would draw together collective members to begin individual research projects in Roman archives and libraries while also collaborating in a social setting.

Funded in part by Kellogg, the five-day seminar in Rome was “a rousing success,” says Graubart. Eight faculty members and seven doctoral students and postdocs representing Dartmouth, Florida International, Princeton, UC Berkeley, UC Riverside, and Notre Dame took part.

The first day set the tone for the event.

“We met for a discussion of theoretical readings, a first round of research presentations, and a pleasant meal in one of our apartments,” Graubart recounts.

“What followed was a freewheeling and provocative conversation, including grad students who had never set foot in an archive previously.”

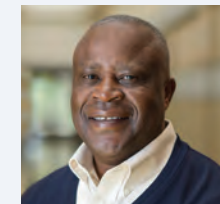
“During the week we accompanied the students to various archives, met for two more rounds of presentations of research, and enjoyed a variety of group meals. The graduate students were incredibly grateful for the opportunity to work in Roman archives alongside more established scholars, and the faculty were pretty much in heaven.”

“Our group meals really provided the glue for the event—since we did not atomize and disperse every evening, the conversations just deepened and deepened.”

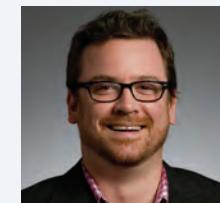
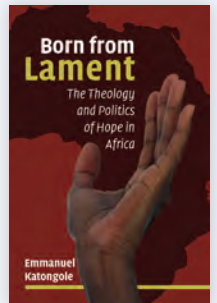
The group plans a variety of scholarly products, which in addition to individual production by each collective member will include a special issue of *Hemisphere* for a broad audience, and a future edited volume.

learn more at: kellogg.nd.edu/AR2017/creativity

New Books on Africa by Faculty Fellows



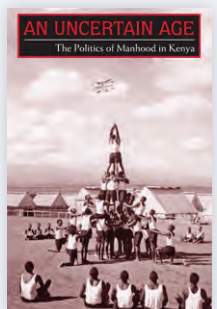
FR. EMMANUEL KATONGOLE



TERENCE E. McDONNELL



PAUL OCOBOCK





The Kellogg International Scholars Program has been the jumpstart of my entire time at Notre Dame. I can honestly say I wouldn't be where I am without it.

—**Sreeraahul Kancherla '17**
Kellogg International Scholar

Developing Undergraduate Scholars

Institute student programs allow exceptional undergraduates to focus and develop their international interests and scholarly abilities. Research grants, fellowships, and internships complement the Kellogg International Scholars Program (Kellogg ISP), which matches students with faculty in a unique research partnership.

“My passion is the role of public policy in devising strategies to alleviate poverty,” says International Scholar **Sreeraahul Kancherla '17**. “As a child of emigrants to the US from India, I grew up talking about economic and human development.”

At Notre Dame, he quickly found the Kellogg International Scholars Program and partnered with Faculty Fellow **Jeffrey Bergstrand**, whose research group manages a massive database widely recognized as the world's foremost compilation of levels of trade integration and liberalization.

“Sree has a passion for research and a very good eye for it,” says Bergstrand. “He's highly motivated and entrepreneurial in his desire and ability to figure out analytical problems, and he has strong economic insights.”

Kancherla participated in the work of the research group even during his junior year, when he studied mathematics at the University of Oxford's Oriol College—and earned “firsts” across all 13 of his courses.

“I'm pretty invested in the database,” he says. “We students consider it our data set, too!”

Bergstrand named Kancherla the research group's senior leader in 2016, and tasked him with organizing, leading, and mentoring the group's other student members.

“I've had some great senior leaders, and Sree is certainly one of the best,” Bergstrand says.

Simultaneously, Kancherla immersed himself in a variety of projects in Notre Dame's Wilson-Sheehan Lab for Economic Opportunities (LEO) and wrote a senior thesis on the varying effects of unemployment insurance.

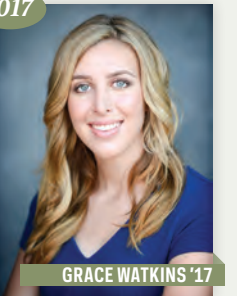
Now he is heading to a top-tier doctoral program in economics at the University of California, Berkeley on a five-year National Science Foundation Graduate Research Fellowship. He is one of only 29 economics winners nationwide.

“The Kellogg ISP has extended my understanding of development and my ever-expanding worldview,” Kancherla says.

“I truly believe I was chosen for a year at Oxford and a position at LEO largely because I had a proven record with Professor Bergstrand. The ISP research has certainly been a differentiator.”

Three Kellogg International Scholars in three years win Rhodes

2017



GRACE WATKINS '17

2016



EMILY MEDIATE '15

2015



ALEX COCCIA '14

learn more at: kellogg.nd.edu/AR2017/undergrad



The chance to go repeatedly to Tanzania has allowed me to ground all of my research in reality, which is something that I've come to value immensely.

—**Luke Maillie '18**

*Kellogg International Scholar
International Development Studies Minor*

Engaging the World Through International Fieldwork

Fieldwork in the developing world provides students with hands-on experiences that can be transformative. Kellogg internships, fellowships, and research grants complement the International Development Studies (IDS) and Latin American Studies Program (LASP) minors, often allowing undergraduates the opportunity to conduct independent field research.

*Funded by the Kellogg Institute, International Scholar **Luke Maillie '18**, a physics-in-medicine major and International Development Studies minor, has spent three successive summers and a winter break in the small town of Shirati, Tanzania, gaining firsthand knowledge of the challenges of delivering rural health care as he conducts research for his IDS capstone. He writes:*

Here in Shirati, I am studying the systems that deliver—or more often, fail to deliver—cancer care to rural patients. To understand the complexity of care, I am working for the head cervical cancer nurse at the local district hospital.

While for most patients a cancer diagnosis means a trek to the nearest treatment facility four or five hours away, cervical cancer can often be treated locally. The screening unit, run by donors for five years, had its funding cut nine months ago, and I've been assisting the head nurse as she figures out how to manage the ward on her own.

We have travelled to the city looking for supplies. I've helped her to collaborate with community health workers to advertise screening outreach in remote villages. And I've been able to watch her

try to ensure more advanced cancer patients are referred to appropriate care elsewhere.

As diseases like cancer rise in prevalence in Tanzania, rural health systems are being called upon to deliver a continuum of care instead of the episodic care that characterizes the treatment of communicable diseases.

Building systems to deliver such cancer care continues to be a struggle—the one-year survival rate for advanced cervical cancer cases in Shirati hovers around two percent. We and the cancer patients can't help asking, is complex care simply too much to ask for in rural areas?

In global health, it's easy to fall into discussions of minutiae while missing the bigger picture. Being in Tanzania has allowed me to reflect on and reevaluate theory in light of real-world situations.

At the same time, interviewing cervical cancer patients and directly observing what it takes to get them care is foundational to my research on the resiliency of the area's cancer referral system.



A renewed
**emphasis on
research** this
year at Kellogg
enabled
**48% more
undergraduates**
to conduct
research in
23 countries
around the world.

learn more at: kellogg.nd.edu/AR2017/fieldwork



Kellogg was born out of concern for the world, to improve democracy and end dictatorships in other countries, and that inheritance brings Kellogg graduate students together. I couldn't imagine a better place to do my PhD—it feels like home.

—**Laura Gamboa Gutiérrez**
PhD Fellow

Investing in the Next Generation of Scholars

Engagement with the welcoming Kellogg community coupled with a variety of research support makes all the difference to the doctoral students affiliated with the Institute. Drawn to work with renowned Notre Dame faculty, they become an integral part of the Institute's intellectual life.

For the third time in five years, a Kellogg doctoral student won the highest honor bestowed on Notre Dame graduate students. PhD Fellow **Laura Gamboa Gutiérrez** (PhD July 2016) received the 2017 Shaheen Graduate School Award in the social sciences in May.

Gamboa's dissertation committee was composed entirely of current or former Kellogg faculty fellows: **Michael Coppedge**, **Scott Mainwaring**, and **David Nickerson**.

"Laura was among the best students I taught at Notre Dame," said Mainwaring. "She wrote an agenda-setting dissertation of great relevance in contemporary world politics, focusing on democracies undermined by presidents who do not tolerate legitimate oppositions."

"I don't think without Kellogg I would have written this dissertation—or any dissertation at all," Gamboa says.

She cites funding—her PhD fellowship followed by a dissertation year fellowship—but beyond that the supportive Kellogg community and its normative research concerns.

The idea for the dissertation came to her at a Kellogg lecture, and she presented drafts in numerous Kellogg workshops. Along the way, she received feedback from fellow students, faculty fellows, and "all the people from many disciplines that pass through Kellogg."

"I wouldn't have written a dissertation of the same quality without that feedback," she says. "Kellogg fosters a very constructive environment."

Now teaching at Utah State University, Gamboa has come to realize how Notre Dame—and particularly Kellogg—encouraged her to "think big."

"We care about the world and how our work could help the world in some way," she says. "That's part of the legacy of Kellogg founding director **Guillermo O'Donnell**."

"I couldn't imagine a better place to do my PhD—it feels like home."



New Kellogg Award Honors Doctoral Students

In May, PhD Fellow **Juan Albarracín Dierolf** won the inaugural Kellogg Institute Award for Outstanding Doctoral Student Contributions in recognition of his exemplary scholarship and deep engagement across the Kellogg community.

110 graduate affiliates from
26 countries in
11 disciplines
16 received PhD in 2017

learn more at: kellogg.nd.edu/AR2017/doctoral



Faculty Fellow **Lakshmi Iyer**, Director, Sustainable Development Concentration, Keough School of Global Affairs



Our distinctive Kellogg strengths in building research excellence and global partnerships around issues of human development are a vital contribution to the success of Notre Dame's new School of Global Affairs.

—**Paolo Carozza**
Kellogg Institute Director

Advancing Human Development Studies within the Keough School

The search for comprehensive solutions to contemporary human problems benefits from innovative educational approaches. Working across disciplinary boundaries, the Kellogg community engages with scholars, students, and practitioners around the world to develop multifaceted understandings of complex global issues.



Notre Dame's new Keough School of Global Affairs offers Kellogg an unparalleled opportunity to respond to global challenges by expanding teaching, research, and partnerships related to human development.

As laid out in its 2017–22 strategic plan, Kellogg has engaged in building two innovative and overlapping program areas within the School. The Institute is coleading and supporting the Sustainable Development (SD) concentration, one of three Master of Global Affairs (MGA) tracks, as well as playing a major role in conceptualizing and leading the signature Integration Lab (i-Lab).

“Educating master’s students has not been part of Kellogg’s profile in the past, but the creation of the Keough School has given us a welcome opportunity to advance our strategic goals around education in a new and exciting way,” says Kellogg Institute Director **Paolo Carozza**.

“We are delighted to be helping Keough to conceptualize and provide academic leadership in the SD concentration and the i-Lab. It is an

important and rewarding relationship for both Kellogg and the new School.”

With its focus on human development studies and research, and its undergraduate minor in International Development Studies, Kellogg has a deep bench of experts among its faculty and visiting fellows. Many have helped develop the SD curriculum, and Faculty Fellow **Lakshmi Iyer** has taken the Kellogg-supported post of director of the SD concentration.

“We aim to provide students with the knowledge and the skills to undertake, evaluate, and improve international development initiatives,” she says.

Faculty Fellows **Tracy Kijewski-Correa** and **Steve Reifenberg** will teach MGA students from all three concentrations as the codirectors of the Integration Lab, which receives financial and logistical support from Kellogg.

The i-Lab promises to deepen key institutional linkages with Kellogg global partners, resulting in research opportunities for Institute scholars, doctoral students, and undergraduates.

25%

of Kellogg faculty fellows are actively affiliated with the new Keough School

52%

of Keough faculty members are affiliated with the Kellogg Institute

67%

of the faculty teaching SD courses in the concentration’s inaugural year are members of the Kellogg community, representing 6 disciplines

learn more at: kellogg.nd.edu/AR2017/keough



Community Engagement Informs Research

What works and why? The Kellogg Institute aims to make a difference in the world by linking lessons learned in community research to people grappling with real-world issues in other communities across the globe.



When the Institute’s Ford Program in Human Development Studies and Solidarity first began work in Dandora, a section of Nairobi beset by poverty, pollution, and violence, a listening project was the first priority.

Women expressed a need for better child and maternal health care—and the Dandora Holy Cross Parish and its friends responded, building a state-of-the-art maternity clinic where mothers began giving birth in 2017. It is also the site of research that can contribute to the long-term health of the community.

With Ford Program funding, Faculty Fellow **Terence Johnson**, an economist who previously investigated entrepreneurship in Dandora, is studying how better-quality care and/or more money in mothers’ pockets during pregnancy can improve the health of women and their children.

“Before now, we’ve had no idea what people are willing or able to pay for health care, and how large the benefit of assistance would be,” he says.

During a baseline survey of 7000 potential mothers, 3300 won vouchers to reduce the cost

of delivery at the new clinic. Over two years, the researchers will track the health of mothers and their babies, seeing if those who deliver there—and those whose low-cost vouchers enable them to work less or spend more on food during their pregnancies—do better.

“We are tracing out the demand curve for people who are currently excluded from the market to disentangle the effects of health and wealth,” explains Johnson. “As you change the value of the voucher, you can induce people to make different choices.”

The results should help the clinic set rates appropriate to the community and contribute as well to evidence-based public policy.

The multiyear randomized controlled trial is a complicated one, and the Ford Program has been “invaluable” in its meticulous execution, says Johnson.

“It would not be possible to do projects like this without the Ford team.”

CURRENT FORD RESEARCH

UGANDA

“Education and Dignity”

“Nurturing Social Enterprises”

KENYA

“Exploring Motherhood in Dandora”

“Disentangling the Benefits of Health and Wealth”

“Education, Citizenship, and Civic Life” *(exploratory)*

ITALY, AUSTRIA, GERMANY

“Religion and the Integration of Migrants/Refugees”

PERU

“Empowering Pregnant Women in Lima” *(exploratory)*



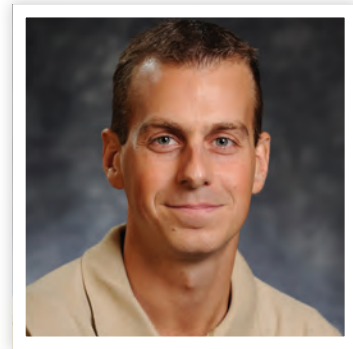
When the poorest and most vulnerable people are priced out of a market, how do you help them?

—Terence Johnson

Faculty Fellow



learn more at: kellogg.nd.edu/AR2017/engagement



We are tremendously proud that we were able to persuade the NSF engineering and social sciences divisions to jointly fund this work in a developing nation.

—**Alexandros Taflanidis**
Faculty Fellow

Innovative Partnerships Take Lessons to the World

Engaging and building partnerships around the globe amplifies many times over the effects of Kellogg work on core themes of democracy and human development. Teaching and learning goes full circle when scholars and students from the Kellogg community engage with policy makers and change agents elsewhere in the world.



When Hurricane Matthew hit Haiti in October 2016, Kellogg Faculty Fellows **Tracy Kijewski-Correa** and **Alexandros Taflanidis**, structural engineers who had been working to develop disaster-resistant housing on the island since Haiti’s massive 2010 earthquake, knew their team had to get on the ground immediately.

“Matthew was the first Category 4 storm to impact Haiti in more than a half century,” says Kijewski-Correa. “We needed to get there to collect perishable information while it was still fresh.”

From their previous Kellogg-funded work in Haiti, the pair knew the value of assembling an interdisciplinary team. They partnered with social scientists—Faculty Fellows **Debra Javeline**, a political scientist, and **Karen Richman**, an anthropologist—as well as with engineers from Notre Dame and the University of Florida.

Winning unprecedented funding from the National Science Foundation (NSF), which rarely funds disaster reconnaissance work outside the US (and especially both engineering and human survey components), the engineers spent nine days in

Haiti in November, measuring the effects of the hurricane’s storm surge and winds.

In the summer, the team tapped Richman’s expertise in Haitian language and culture and Javeline’s expertise in survey research to go door to door, talking to 500 residents to document household recovery plans and factors affecting homeowners’ responses to the disaster.

“This study will let us dive deep to understand how people relate factors that affect vulnerability and attitudes like religion, culture, and economic capacity,” says Kijewski-Correa. “Religion is normally not studied in disaster risk reduction, but it is one of the more powerful drivers of people’s decisions around climate and disasters.”

She can’t overstate the value of the interdisciplinary partnership and the implications for policy and community practice.

“Without the social science piece of how people make these decisions and the factors that influence them, all the engineering is never adopted—that’s why we are really excited about joining these two parts together,” she says.

2
long-time partners, Kellogg and CIDE, convened

16
experts affiliated with

9
universities, think tanks, and human rights and international organizations

to explore transitional justice and the fight against impunity in Mexico



A bottom-up approach to truth seeking

—**Mariclaire Acosta**
Former Visiting Fellow

learn more at: kellogg.nd.edu/AR2017/partnerships



Ford Family Notre Dame Award for Human Development and Solidarity

The Ford Program in Human Development Studies and Solidarity presented the Ford Family Notre Dame Award to **Cardinal Luis Antonio Gokim Tagle** of the Philippines in recognition of his humble, dynamic, and persistent advocacy for the marginalized around the world. A tireless champion of the poor, he currently serves as president of Caritas International.

New Comparative Politics Lecture Series

Organized by Faculty Fellows **Michael Coppedge** and **Andrew Gould**, the new “Perspectives on World Politics” series spotlights the Institute’s strength in comparative politics. Distinguished speakers deliver public lectures and hold master classes with doctoral students, as **Teri Caraway** does here.



“Transitional Justice and the Struggle against Impunity in Mexico”

Organized by Faculty Fellow **Guillermo Trejo** with CIDE, this gathering of experts, social leaders, and human rights practitioners in Mexico City considered which lessons learned from the Latin American experience of transitional justice may be applicable to Mexico.



Celebrating the Witness of Blessed Archbishop Óscar Romero

The 30th celebration of the life and work of Archbishop Romero of El Salvador took the form of a conference that drew participants from around the world, including **Cardinal Óscar Andrés Rodríguez Maradiaga** of Honduras. Organized by Latin American/North American Church Concerns (LANACC), Romero Days is the brainchild of Faculty Fellow **Rev. Robert Pelton, CSC**, who was honored at the conference.



Engaging the World



“People increasingly assume that the fundamental principles of democracy and Islam are in inevitable conflict... [in fact] the greater the intensity of religious practice, the greater the support for democracy.”

—**Al Stepan**
Wallace Sayre Professor
of Government Emeritus,
Columbia University

Al Stepan Champions “Twin Tolerations” in Return to Kellogg

Renowned political scientist and institution builder **Al Stepan '58** engaged with undergraduates in the Kellogg International Scholars and Hesburgh Yusko Scholars Programs—and then delivered a tour-de-force lecture on the compatibility of Islam and democracy before a rapt audience from across the University. In his current work, he uses “twin tolerations” to refer to a clear distinction and mutual respect between civil and religious leaders and institutions. More than 30 years ago, Stepan advised **Fr. Ted Hesburgh, CSC** on the direction of the fledgling Kellogg Institute and later served on the Institute’s Advisory Board.

Thank You to Our Donors

The generous financial support of our contributors makes possible the breadth and depth of Kellogg Institute programs and initiatives at Notre Dame and around the world. We are grateful.

DESIGNATED ENDOWMENTS

Dorini Family Endowment
(Donald K. Dorini)

Ford Family Endowment
(Doug and Kathy Ford)

Helen Kellogg Endowment

Johnson Family Endowment for Excellence
(J. Kenneth Johnson)

Latin American Indigenous Language Learning Endowment
(Sabine G. MacCormack)

O'Connell Family Fund for Excellence
(Jamie and Mary Joel O'Connell)

Sullivan Endowment
(Frank E. Sullivan)

Ubuntu Endowment for Excellence
(Rick and Chelsea Buhrman)

The William and Flora Hewlett Foundation Endowment

GIFTS* AND GRANTS

Peter Coccia and Nena Couch

Donald and Marilyn Keough Foundation

Roberto Garza Delgado

Hyster-Yale Materials Handling, Inc.
(matching gift)

Tara Kenney and Gary T. Grasse

F. Joseph and Deborah Loughrey

Lumina Foundation for Education
(matching gift)

Carl F. Muñana

Dr. and Mrs. Theodore O'Connell

Alberto M. Piedra II

Dr. and Mrs. Brendan M. Prendergast

Reilly Family Foundation, Inc.

US Army War College Fellowship Program

Fiscal Year 2016-17

REVENUE Annual Drawdowns

ENDOWMENTS	
Dorini	\$48,396
Ford Family	\$366,223
Hewlett	\$519,723
Johnson Family	\$5,762
Kellogg	\$2,679,642
Latin American Indigenous Language Learning (LAILL)	\$30,746
O'Connell Family	\$12,862
Sullivan	\$471,346
Ubuntu	\$7,668
Subtotal	\$4,142,368
GIFTS AND GRANTS	
GIFTS	
Individual Gifts	\$453,675
GRANTS	
US Army War College	\$15,000
Subtotal	\$468,675
TOTAL	\$4,611,043



EXPENDITURES	ENDOWMENT		GIFTS & GRANTS		COMBINED AMOUNT	% OF TOTAL
	SPENDING	% OF TOTAL	SPENDING	% OF TOTAL		
FACULTY SUPPORT	\$884,742	22%	\$177,753	38%	\$1,062,495	23%
Faculty Salaries & Benefits	\$593,680		\$0		\$593,680	
Faculty Recruiting	\$905		\$0		\$905	
Faculty Research Support	\$178,965		\$135,341		\$314,306	
Academic Conferences & Workshops	\$102,761		\$41,918		\$144,679	
Working Groups	\$8,431		\$494		\$8,925	
EXTERNAL VISITORS	\$573,049	14%	\$6,778	1%	\$579,827	12%
Visiting Fellows	\$447,066		\$6,778		\$453,844	
Distinguished Research Affiliates	\$74,498		\$0		\$74,498	
Short-Term Visitors	\$5,830		\$0		\$5,830	
Distinguished Visitor Lecture Series	\$45,655		\$0		\$45,655	
STUDENT SUPPORT	\$555,227	13%	\$44,620	10%	\$599,847	13%
Doctoral Fellowships, Grants & Awards	\$231,410		\$22,680		\$254,090	
Undergraduate Research Awards	\$87,995		\$17,504		\$105,499	
International Scholars Program	\$61,841		\$0		\$61,841	
Undergraduate Internships	\$102,557		\$4,436		\$106,993	
Undergraduate Academic Program Support	\$23,040		\$0		\$23,040	
Student Conferences & Events	\$29,690		\$0		\$29,690	
Study Abroad/Exchange Programs	\$18,694		\$0		\$18,694	
EVENTS/OUTREACH	\$220,167	5%	\$777	0%	\$220,944	5%
Lectures & Public Events	\$108,967		\$777		\$109,744	
Communications, Publications, & Website	\$80,271		\$0		\$80,271	
Intramural, K-12, & Local Outreach	\$25,167		\$0		\$25,167	
Policy Outreach	\$5,762		\$0		\$5,762	
PROJECTS/PARTNERSHIPS	\$200,652	5%	\$205,364	44%	\$406,016	9%
Institutional Collaboration/Partnerships	\$137,658		\$16,069		\$153,727	
Community Engagement & Community-Based Research	\$352		\$142,464		\$142,816	
Program/Strategic Development	\$62,642		\$11,693		\$74,335	
Global Leadership Program	\$0		\$35,138		\$35,138	
ADMINISTRATION	\$1,634,697	39%	\$33,383	7%	\$1,668,080	36%
Staff Salaries & Benefits	\$1,552,437		\$33,383		\$1,585,820	
Student Salaries	\$23,967		\$0		\$23,967	
Administrative Services & Supplies	\$47,557		\$0		\$47,557	
Computer Equipment & Supplies	\$8,182		\$0		\$8,182	
Hesburgh Center Building Expenses	\$2,554		\$0		\$2,554	
CAPITAL EXPENDITURES	\$73,834	2%	\$0	0%	\$73,834	2%
Hesburgh Center Building Renovations	\$73,834		\$0		\$73,834	
TOTAL EXPENDITURES	\$4,142,368	100%	\$468,675	100%	\$4,611,043	100%

*Reporting gifts \$500 and above

The People of the Kellogg Institute 2016–17

FACULTY COMMITTEE

Edward (Ted) Beatty
Jeffrey Bergstrand
Susan Blum
Michael Coppedge
Rev. Robert Dowd, CSC
William N. Evans
Joseph Kaboski
Tracy L. Kijewski-Correa
Ann Mische
Rev. Timothy R. Scully, CSC
Guillermo Trejo

DIRECTORS

Paolo Carozza
Director

Steve Reifenberg
Executive Director

Sharon Schierling
Managing Director

Holly Rivers
Associate Director

Rev. Robert Dowd, CSC
Ford Program Director

INSTITUTE STAFF

Judy Bartlett
IT Operations and Planning Engineer

Jaimie Bleck
Senior Research Advisor, Ford Program

Danice Brown
Monitoring and Evaluation Specialist

Karen Clay
Communications Program Manager

Jennifer D'Ambrosia
Database Administrator

Deirdre Guthrie
Research Assistant Professor, Wellbeing at Work

Therese Hanlon
Events Program Manager

Elizabeth Simpson Hlabse
Research Project Manager

Lancie Marvin
Senior Administrative Assistant

Jenny Meert
Administrative Assistant

Jackline Oluoch-Aridi
East Africa Regional Program Coordinator, Ford Program

Guadalupe Ramirez
Administrative Assistant, Latin American/North American Church Concerns

Elizabeth Rankin
Senior Editor

Tracy Rendall
Events Administrative Assistant

Ilaria Schnyder von Wartensee ▼
Research Assistant Professor, Ford Program



Carrie Shoemaker
Multimedia Communications Specialist

Lauren Squires
Senior Research Associate, Wellbeing at Work

Rachel Thiel
Program Coordinator

Mike Vissage
Staff Accountant

Kristi Wojciechowski
Business Manager

Denise Wright
Program Coordinator, Visiting Fellow and Graduate Student Programs

FACULTY FELLOWS

Africana Studies

Dianne M. Pinderhughes
President's Distinguished Professor and Professor of Africana Studies and Political Science

Anthropology

Maurizio Albahari
Associate Professor

Christopher Ball
Assistant Professor

Susan D. Blum
Professor

Catherine Bolten
Associate Professor of Anthropology and Peace Studies

Carolyn Nordstrom
Professor of Anthropology Emerita

Rahul Oka
Ford Family Assistant Professor of Anthropology

Natalie Porter
Assistant Professor

Vania Smith-Oka
Associate Professor

Biological Sciences

Edwin Michael
Professor

Civil and Environmental Engineering and Earth Sciences

Tracy L. Kijewski-Correa
Leo E. and Patti Ruth Linbeck Associate Professor and Codirector, Integration Lab, Keough School of Global Affairs

Alexandros Taflanidis
Associate Professor

East Asian Languages and Cultures

Lionel M. Jensen
Associate Professor

Economics

Simeon Alder
Assistant Professor

Rev. Ernest Bartell, CSC
Professor Emeritus

Wyatt Brooks
Assistant Professor

Kevin Donovan ►
Assistant Professor

Kirk Doran
Associate Professor

William N. Evans
Keough-Hesburgh Professor of Economics and Chair

A. Nilesh Fernando
Assistant Professor

Antoine Gervais
Assistant Professor

Thomas Gresik
Professor

Lakshmi Iyer
Associate Professor of Economics and Global Affairs and Director, Sustainable Development Concentration, Master of Global Affairs, Keough School of Global Affairs

Terence Johnson
Joseph and Deborah Loughrey Assistant Professor of Economics and Human Development

Joseph Kaboski
David F. and Erin M. Seng Foundation Professor of Economics

Steve Lugauer
Assistant Professor

Nelson Mark
Alfred C. Decrane, Jr. Professor of International Economics

Zachary Stangebye
Assistant Professor

Jeff Thurk
Assistant Professor



Film, Television, and Theatre

Anton Juan
Senior Professor of Directing and Playwriting/Theatre and Social Concerns

History

Ted Beatty
Professor and Associate Dean for Academic Affairs, Keough School of Global Affairs

Liang Cai
Assistant Professor

Mariana Candido
Associate Professor

Karen B. Graubart
Associate Professor

Elisabeth Köll
Associate Professor

Semion Lyandres
Professor

Paul Ocobock
Assistant Professor

Jaime Pensado
Associate Professor

Institute for Latino Studies

Karen Richman
Director of Undergraduate Academic Programs

Irish Language and Literature

Brian (Breen) Ó Conchubhair
Associate Professor and Director, Center for the Study of Languages and Cultures

Keough School of Global Affairs

Steve Reifenberg
Associate Professor of Practice and Codirector, Integration Lab; Executive Director (through 6/17) and Senior Strategic Advisor (from 7/17), Kellogg Institute for International Studies

Sara Sievers
Associate Dean for Policy and Practice

Law School

Roger P. Alford
Professor and Associate Dean

Paolo G. Carozza
Professor and Director, Kellogg Institute for International Studies

Douglass Cassel
Professor

Mendoza College of Business

Viva Bartkus
Associate Professor of Management

Jeffrey H. Bergstrand
Professor of Finance

Matt Bloom
Associate Professor of Business Management

Georges Enderle
John T. Ryan Jr. Chair in International Business Ethics

Juan M. Rivera
Emeritus Professor of Accountancy

John Sherry
Raymond W. & Kenneth G. Herrick Professor of Marketing

Lee A. Tavis
C. R. Smith Emeritus Professor of Finance

Elizabeth Tuleja
Associate Teaching Professor of Management



Music

Carmen-Helena Téllez
Professor of Conducting and Director, Choral Conducting Graduate Programs

Notre Dame International

Jonathan Scott Noble
Assistant Provost for Internationalization

Political Science

Ruth Abbey
Professor of Political Science and Interim Director, Kroc Institute for International Peace Studies

Jaimie Bleck
Assistant Professor and Senior Research Advisor, Ford Program in Human Development Studies and Solidarity

Michael Coppedge
Professor

Sarah Zukerman Daly
Assistant Professor

Michael C. Desch
Professor

Rev. Robert Dowd, CSC
Associate Professor and Director, Ford Program in Human Development Studies and Solidarity

Amitava Krishna Dutt
Professor of Economics and Political Science

Andrew Gould
Associate Professor

Michael Hoffman
Assistant Professor

◀ **Victoria Tin-Bor Hui**
Associate Professor

Debra Javeline
Associate Professor

Robert C. Johansen
Professor Emeritus

▶ **Karrie Koesel**
Associate Professor

Rev. William M. Lies, CSC
Vice President for Mission Engagement and Church Affairs

George A. Lopez
Professor of Political Science Emeritus

Scott P. Mainwaring
Eugene P. and Helen Conley Professor of Political Science

A. James McAdams
William M. Scholl Professor of International Affairs and Director, Nanovic Institute for European Studies

Rev. Sean D. McGraw, CSC
Assistant Professor

Daniel Philpott
Professor of Political Science and Peace Studies

Emilia Justyna Powell
Associate Professor

Luc Reydamas
Professor of the Practice

Rev. Timothy R. Scully, CSC
Professor and Hackett Family Director, Institute for Educational Initiatives

Guillermo Trejo
Associate Professor

Ernesto Verdeja
Associate Professor of Political Science and Peace Studies

Susanne Wengle
Assistant Professor



Romance Languages and Literatures

Thomas Anderson
William M. Scholl Professor of Latin American Literature and Chair

Rev. Gregory Haake, CSC
Assistant Professor of French and Francophone Studies

Ben Heller
Associate Professor

Carlos A. Jáuregui
Associate Professor of Latin American Literature

Vanesa Miseres
Assistant Professor of Spanish

Marisel Moreno
Associate Professor of Latino/a Literature

María Rosa Olivera-Williams
Professor of Latin American Literature

Juan Vitulli
Associate Professor of Iberian and Latin American Literature and Culture

Sociology

Jorge A. Bustamante
Eugene Conley Professor of Sociology

Gilberto Cárdenas
Professor and Executive Director, Notre Dame Center for Arts and Culture

Mary Ellen Konieczny
Associate Professor and Henkels Family Collegiate Chair

Erin Metz McDonnell
Kellogg Assistant Professor of Sociology

Terence McDonnell
Associate Professor

Ann Mische
Associate Professor of Sociology and Peace Studies

Christian Smith
William R. Kenan, Jr. Professor of Sociology; Director, Center for the Study of Religion and Society; and Director, Center for Social Research

Lyn Spillman
Professor

J. Samuel Valenzuela
Professor

Theology

Peter Casarella
Associate Professor and Director, Latin American/North American Church Concerns

Rev. Daniel Groody, CSC
Associate Professor and Director of Immigration Initiatives, Institute for Latino Studies



▲ **Rev. Gustavo Gutiérrez, OP**
John Cardinal O'Hara Professor of Theology

Fr. Emmanuel Katongole
Associate Professor of Theology and Peace Studies

Rev. Paul V. Kollman, CSC
Associate Professor and Leo and Arlene Hawk Director, Center for Social Concerns

Rev. Paulinus I. Odozor, CSSp
Associate Professor of Theology and Africana Studies

Rev. Robert Pelton, CSC

Director Emeritus, Latin American/North American Church Concerns and Director Emeritus, Institute for Pastoral and Social Ministry

Lawrence E. Sullivan

Professor Emeritus of Theology and Anthropology

Todd D. Whitmore

Associate Professor and Codirector, Program in Catholic Social Tradition

VISITING FELLOWS

Brazilian Fulbright Distinguished Chair in Democracy and Human Development

Henrique Carlos de Oliveira de Castro
(Fall semester)

*Department of Economy and International Relations, Political Science Graduate Program
Federal University of Rio Grande do Sul (UFRGS)*

“Human Development and Democracy: A Political Culture Approach”

Kellogg Institute Hewlett Fellow for Public Policy

Katherine Corcoran (Spring semester)

Former Bureau Chief for Mexico and Central America, Associated Press

“En la Boca del Lobo (In the Lion’s Den): Press Freedom in Mexico”

Hernán Flom (Academic year)

*Department of Political Science
University of California, Berkeley*

“The Politics of Organized Crime Regulation in Latin America”

Lauren Honig (Academic year)

*Department of Government
Cornell University*

“Land, State-Building, and Political Authority in Africa”

Stuart Kirsch (Fall semester)

*Department of Anthropology
University of Michigan*

“The Politics of Engaged Research: Anthropology Beyond the Text”

Tina Lee ▶ (Academic year)

*Department of Sociology
Princeton University*

“Enfranchising Private Entrepreneurs: The Unintended Consequences of Party Building among China’s Industrialists”

Amy Erica Smith (Academic year)

*Department of Political Science
Iowa State University*

“The Culture Wars in Another America: Evangelicals, Catholics, and Brazilian Democracy”

Margaret Triyana (Academic year)

*Department of Economics
Nanyang Technological University, Singapore*

“Components of Health Investments in Developing Countries: Evidence from Indonesia and the Philippines”

GUEST SCHOLARS

Sandra Arenas (November–December)

Department of Theology, Pontificia Universidad Católica de Chile

Col. Jay Hopkins (Academic year)

Army War College Fellow, United States Army

Thomas M. Kelly (September)

Department of Theology, Creighton University

Barbara Koremenos (Fall semester)

Department of Political Science, University of Michigan

Victor Maqqe (Academic year)

Department of History, University of Notre Dame

George Tsebelis (Spring semester)

Department of Political Science, University of Michigan



DISTINGUISHED RESEARCH AFFILIATES

Christopher B. Barrett

Charles H. Dyson School of Applied Economics and Management, Cornell University

Clark Gibson

*Department of Political Science
University of California, San Diego*

Stephen Heyneman

Department of Leadership, Policy, and Organizations, Vanderbilt University

▼ **Pamela Paxton**

Department of Sociology, University of Texas at Austin



Aníbal Pérez-Liñán

Department of Political Science, University of Pittsburgh

Bruce Wydick

Department of Economics, University of San Francisco

ADVISORY BOARD

Joe Loughrey (Chair) ▶

Former Vice Chairman of the Board and President/COO, Cummins Inc.

Santiago Aranguren

Director for Business Development, Arancia Industrial

Zulfiqar Bokhari

Partner, Latham & Watkins

Rodrigo Calderón

President, Calderon Lopez Figueroa Associates

Katherine Schilling Clark

Account Manager, IBM Corporation

Eowyn Ford

Health Policy Analyst, Centers for Medicare and Medicaid Services, US Department of Health and Human Services

Matthew R. Ford

Partner, Bartlit Beck Herman Palenchar & Scott LLP

Roberto Garza Delgado

Chairman and CEO, Gard Corporation

Clark Gibson

Professor of Political Science, University of California, San Diego

Kevin Heneghan

Chairman of the Board, OTR Global

Wendy Hunter

Professor of Government, University of Texas at Austin

Tara Kenney

Senior Vice President, Boston Common Asset Management

Clarke R. Keough

Managing Partner, Keough Investments LLC

Ryan J. Kerrigan

CEO, Alta Environmental and Managing Director, Kerrigan Advisors

R. Christopher Lund

Director, Christopher Participações and President Emeritus, Lund Group of Associated Publishers



Alvaro Martinez-Fonts

Former Vice-Chairman, JP Morgan Private Bank

F. James Meaney

Board Member, Gol Linhas Aereas

Carl F. Muñana

Former CEO, Inter-American Investment Corporation

Mary Joel O’Connell

Vice President, American Express Company

Raymond C. Offenheiser

President, Oxfam America (through 5/17); Director, Notre Dame Initiative for Global Development and Distinguished Professor of the Practice, Keough School of Global Affairs (as of 8/17)

Alberto M. Piedra, II

Managing Member, Ignite D2K

Lindy Reilly

Private Philanthropist and Volunteer

Rev. Timothy Scully, CSC

Professor of Political Science, University of Notre Dame



exploring DEMOCRACY and HUMAN DEVELOPMENT

The Kellogg Institute for International Studies promotes research excellence on critical global challenges, with a particular focus on democracy and human development. Building on a core interest in Latin America and Africa, the Kellogg Institute fosters research on the developing world and beyond.

Supporting the research and educational mission of the University of Notre Dame by engaging faculty, students, and visiting scholars in a supportive intellectual community, the Institute works to project the University onto the global stage.

The Kellogg Institute forms an integral part of Notre Dame's Catholic mission by addressing normative and scholarly concerns that embody the values reflected in Catholic social thought.

With the opening of the Keough School of Global Affairs in summer 2017, the Kellogg Institute significantly expanded its physical space. Staff members have moved into the new Jenkins Nanovic Halls, and the Institute retains its space in the Hesburgh Center, just north of the new building, for Kellogg faculty, visitors, students, and programming.





exploring **DEMOCRACY** *and* **HUMAN DEVELOPMENT**

Photo by Francesca Patti '19
(biological sciences)

Through a brightly painted doorway, International Development Studies minor Patti enters the Mexico City garbage dump where she conducted research on the lack of healthcare for dump dwellers on an Experiencing the World Fellowship.

1130 Jenkins Hall
Notre Dame, Indiana 46556-7000
574.631.6580 •  Like us on Facebook
kellogg.nd.edu



KELLOGG INSTITUTE
FOR INTERNATIONAL STUDIES



UNIVERSITY OF
NOTRE DAME

Keough School of Global Affairs